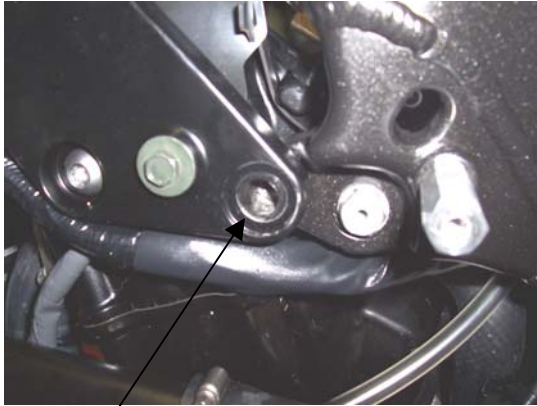




Please note that the way the kit is packed does not necessarily represent the way of mounting to the bike



L.H.S bolt to be removed



R.H.S bolt to be removed

Instructions ZX10R '06- (code CP0165) Crash Protectors

Please note that in cases where kits are packed with rubber washers holding the components onto the bolt – *the rubber washers should be thrown away!*

Nearside (left side as you sit on bike)

Remove fairing panel

Remove water bottle note there is no need to drain the bike just tie the two small hoses up, save the water from bottle as you can use this to refill the new bottle

Remove bolt (see picture above) until it will touch the inside of the fairing

Paint end of bolt with white paint or Tippex

Refit panel (bolt should leave mark on inside of panel)

Remove panel and pilot drill

Refit panel and check hole in correct position

Remove panel and drill 28mm diameter hole (tank cutter/cone cutter)

Use sharp knife to de-burr hole

Remove bolt completely.

Fit the R&G replacement water bottle, and refill with the water you saved earlier

Refit fairing

Take the shorter of the two bolts and slide one of the 10mm washers up to the head of the bolt, then pass it through one of the bobbins supplied (note both bobbins are the same)

Take the shorter of the two spacers and slide it over the exposed end of the bolt with the smaller diameter away from the bobbin

Offer up to bike

Tighten bolt until you feel some compression from inside the protector. Turn a little more so that you feel the compression increase slightly. Then apply a quarter turn. Do not overtighten as damage can occur to the bike. Do not exceed 40nm of torque.

Repeat for offside see picture above for position, using the longer bolt and longer spacer (note recessed end goes away from the bobbin)

CONSUMER NOTICE

The catalogue description and any exhibition of samples are only broad indications of the Products and R&G may make design changes which do not diminish their performance or visual appeal and supplying them in such state shall conform to the order. The Buyer acknowledges no representation or warranty (other than as to title) has been given or will apply to the Products other than those in R&G's order or confirmation and the Buyer confirms it has chosen the Products as being of merchantable quality and suitable for its particular purposes. Where R&G fits the Products or undertakes other services it shall exercise reasonable skill and care and rectify any fault free of charge unless the workmanship has been disturbed. The Buyer is responsible for ensuring that the warranty on the motorcycle is not affected by the fitting of the Products. On return of any defective Products R&G shall at its option either supply a replacement or refund the purchase money but shall not be liable if the Products have been modified or used or maintained otherwise than in accordance with R&G's or manufacturer's instructions and good engineering practice or if the defect arises from accident or neglect.

R&G Racing

Unit 5K, Blacknest Industrial Park, Blacknest Road, Alton, Hampshire, GU34 4PX

Tel: +44 (0)870 220 6380 Fax: +44 (0)1420 521101 www.rg-racing.com Email: info@rg-racing.com



Other than identified above and subject to R&G not limiting its liability for causing death and personal injury, it shall not be liable for indirect or consequential loss and otherwise its liability shall be limited to the amounts paid by the Buyer for the Products or the fitting or service concerned. These terms do not affect the Buyer's statutory rights.

R&G RACING RETURNS POLICY (NON-FAULTY GOODS)

Returns must be pre-authorized (if not pre-authorized the return will be rejected). Goods may only be returned direct to us if they were purchased direct from us (customer must prove if necessary). Otherwise to be returned to original vendor. Goods must be in re-sellable condition, in the opinion of R&G Racing. All returns are subject to a 25% restocking and handling fee (25% of the gross value exc. P&P – at the prevailing price at time of purchase). The customer must pay any and all carriage charges. No returns of discontinued products, unless within 14 days of purchase. This policy does not affect your statutory rights and does not refer to faulty goods.

R&G Racing

Unit 5K, Blacknest Industrial Park, Blacknest Road, Alton, Hampshire, GU34 4PX

Tel: +44 (0)870 220 6380 Fax: +44 (0)1420 521101 www.rg-racing.com Email: info@rg-racing.com