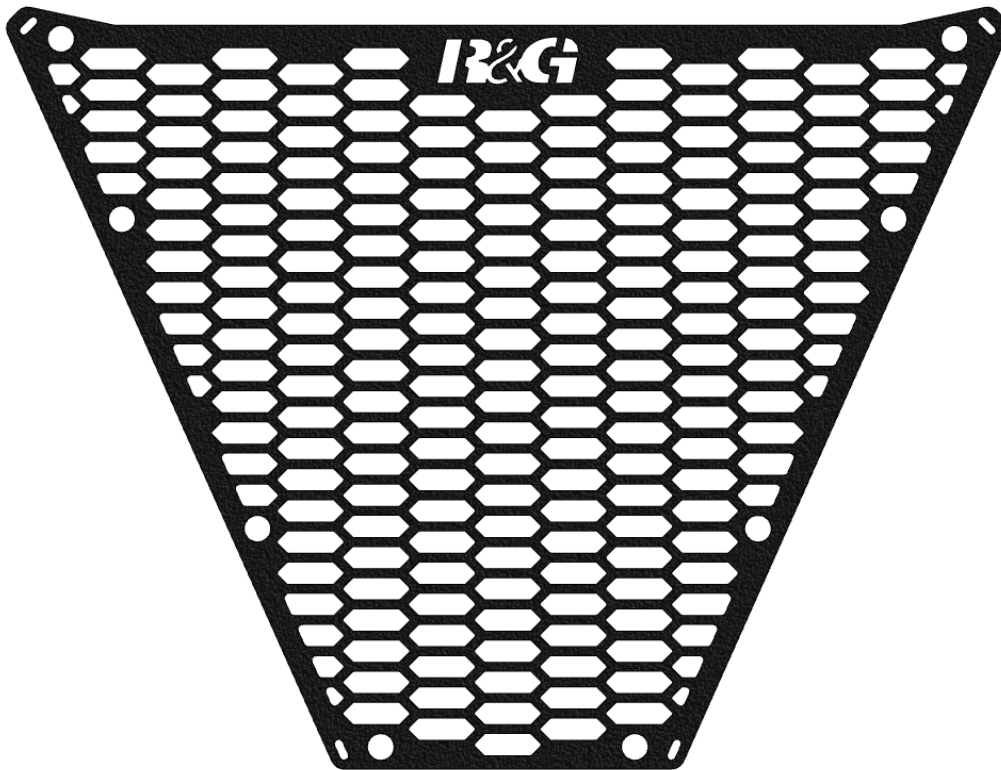




FITTING INSTRUCTIONS FOR OCG0063PRO
OIL COOLER GUARD



THIS KIT CONTAINS THE ITEMS PICTURED AND LABELLED OVER PAGE.

SOME PARTS MAY BE SHOWN FOR CLARITY OF INSTRUCTIONS ONLY.

DO NOT PROCEED UNTIL YOU ARE SURE ALL PARTS ARE PRESENT.

PLEASE READ ALL INSTRUCTIONS BEFORE PROCEEDING.

**IF IN ANY DOUBT WHEN FITTING OUR PRODUCTS, CONSULT ONE OF OUR DEALERS
OR HAVE FITTED BY A QUALIFIED TECHNICIAN.**

PLEASE NOTE THAT THE WAY THE KIT IS PACKED DOES NOT NECESSARILY REPRESENT THE WAY OF
MOUNTING TO THE BIKE.

IN THE EVENT OF RUBBER WASHERS BEING USED TO HOLD COMPONENTS ONTO BOLTS,
THESE RUBBER WASHERS CAN BE THROWN AWAY.

DIGITAL COPIES OF THESE INSTRUCTIONS ARE AVAILABLE FROM:

WWW.RG-RACING.COM

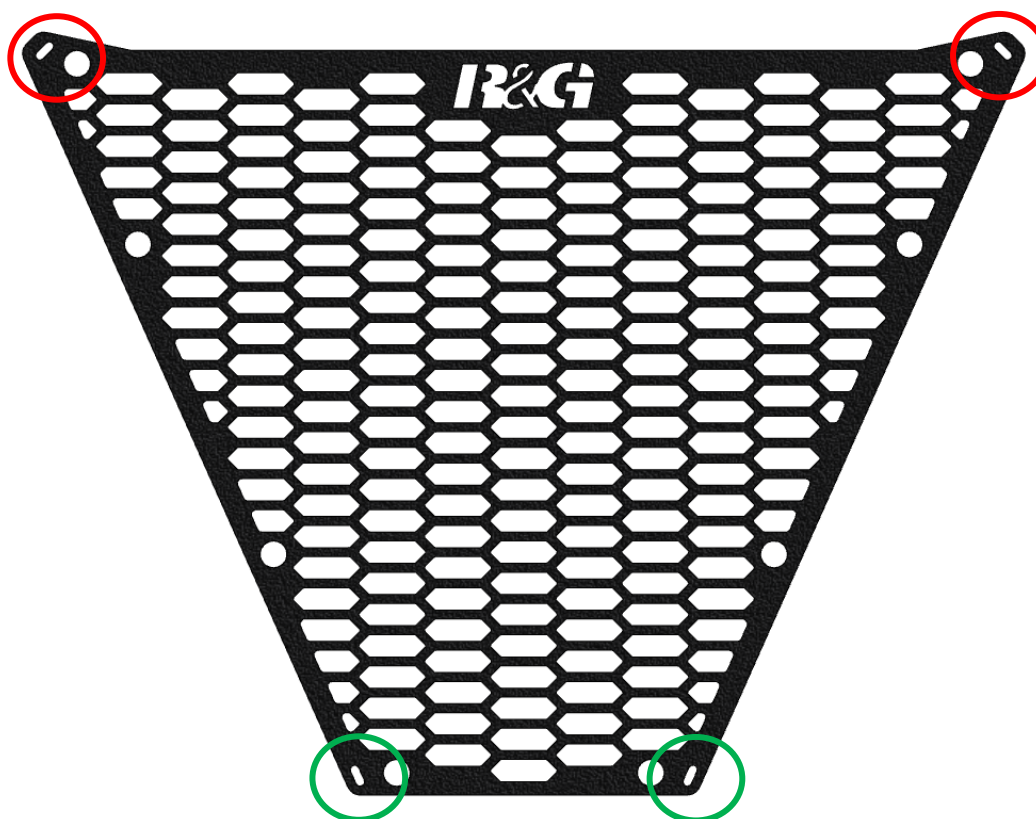


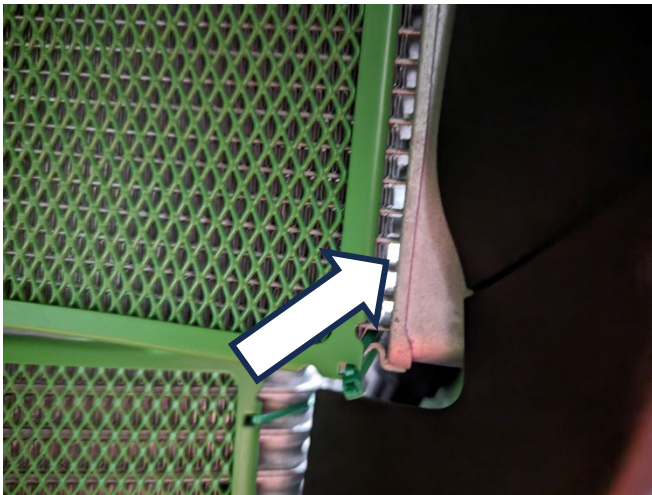
<u>TOOLS REQUIRED</u>	<u>GENERAL TORQUE SETTINGS</u>
<ul style="list-style-type: none"> • Fairing Removal tools (if required) <ul style="list-style-type: none"> • Cable cutters. 	<p>M4 BOLT = 8Nm M5 BOLT = 12Nm M6 BOLT = 15Nm M8 BOLT = 20Nm M10 BOLT = 40Nm M12 BOLT = 40Nm</p>

LEGEND

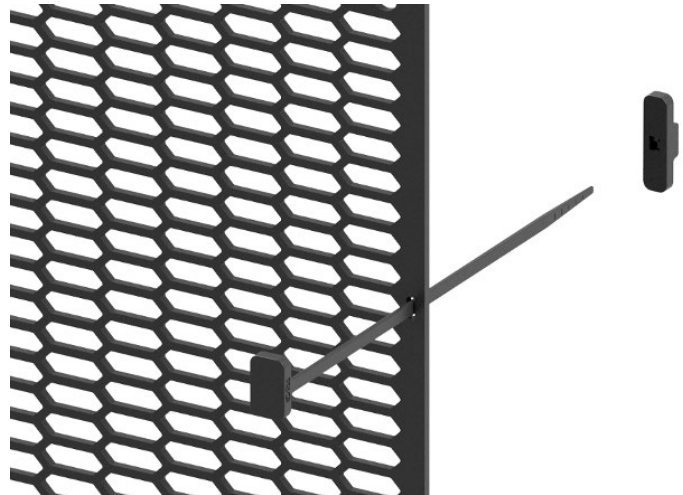
ITEM NO.	DESCRIPTION	QTY
ITEM 1	OIL COOLER GUARD (OCG0063)	1
ITEM 2	RB0015 RUBBER BUNG	8
ITEM 3	2.5mm CABLE TIES	4
ITEM 4	CT130 RADIATOR TIES (PACK OF 4)	1

Assembly diagram





PICTURE 1

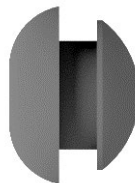


PICTURE 2

FITTING INSTRUCTIONS

- Remove the Fairing & Belly pan from the bike (if applicable).
- Fit the rubber bungs (**item 2**) provided into the 8 holes at the edges of the oil cooler guard (**item 1**), they will sit between the oil cooler and the oil cooler guard according to the diagram:

FRONT OF RAD GUARD



- At the top of the guard, pass one cable tie (**item 3**) per side through the radiator guard cable tie mounts circled in **RED** in the assembly diagram and loop around the upper oil cooler mounts to secure the top of the oil cooler guard.
- Pass 2 of the supplied R&G Radiator ties (**item 4**) through the slots circled in **GREEN** in the assembly diagram, ensuring to pass the cable ties through the outer edge of the oil cooler frame as shown in **picture 1** (not between the fins of the cooling matrix).
- Secure the radiator tie with the backing piece from behind the radiator as shown in **picture 2**, ensuring the teeth engage the radiator tie and the backing piece sits against the rear of the oil cooler to hold the guard in place.
- Snip the excess from all 4 securing ties.
- Refit all fairing and bodywork panels as before.
- Ensure the cable ties are tight before riding. Check tightness of the cable ties regularly, e.g. during cleaning.
- Spare cable ties are provided for removal and re-fitting of the guard as necessary.

ISSUE 1 25/09/2024 (DM)

**CONSUMER NOTICE**

The catalogue description and any exhibition of samples are only broad indications of the Products and R&G may make design changes which do not diminish their performance or visual appeal and supplying them in such state shall conform to the order. The Buyer acknowledges no representation or warranty (other than as to title) has been given or will apply to the Products other than those in R&G's order or confirmation and the Buyer confirms it has chosen the Products as being of merchantable quality and suitable for its particular purposes. Where R&G fits the Products or undertakes other services it shall exercise reasonable skill and care and rectify any fault free of charge unless the workmanship has been disturbed. The Buyer is responsible for ensuring that the warranty on the motorcycle is not affected by the fitting of the Products. On return of any defective Products R&G shall at its option either supply a replacement or refund the purchase money but shall not be liable if the Products have been modified or used or maintained otherwise than in accordance with R&G's or manufacturer's instructions and good engineering practice or if the defect arises from accident or neglect. Other than identified above and subject to R&G not limiting its liability for causing death and personal injury, it shall not be liable for indirect or consequential loss and otherwise its liability shall be limited to the amounts paid by the Buyer for the Products or the fitting or service concerned. These terms do not affect the Buyer's statutory rights.

R&G RETURNS POLICY (NON-FAULTY GOODS)

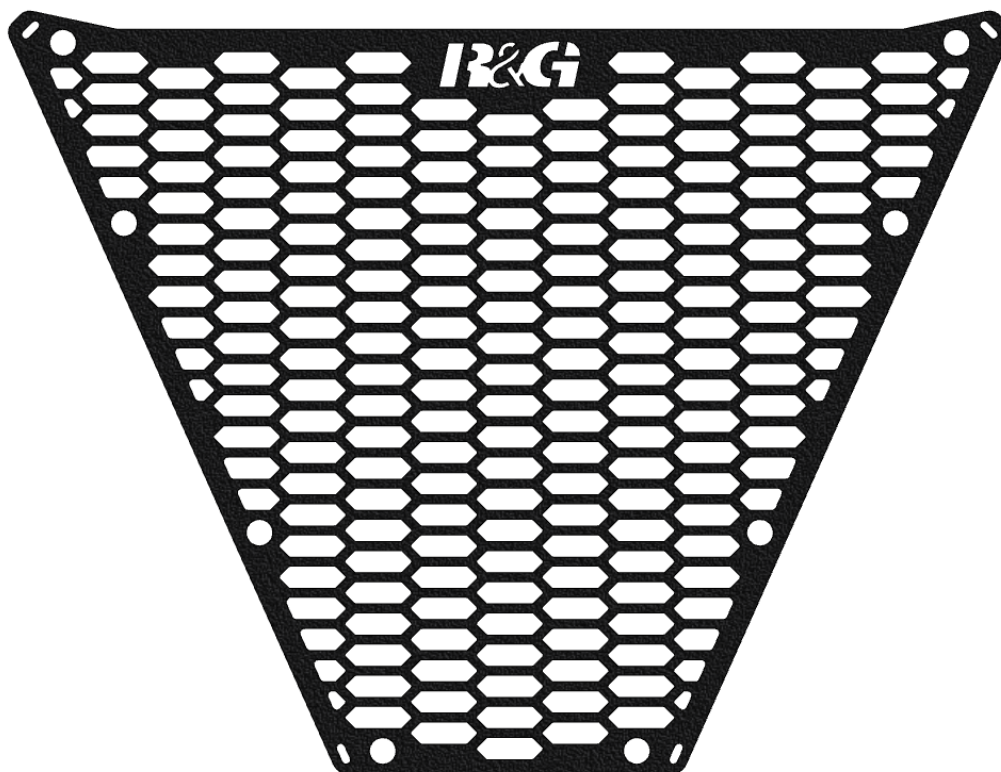
Returns must be pre-authorized (if not pre-authorized the return will be rejected). Goods may only be returned direct to us if they were purchased direct from us (customer must prove if necessary). Otherwise to be returned to original vendor. Goods must be in re-sellable condition, in the opinion of R&G. All returns are subject to a 25% restocking and handling fee (25% of the gross value exc. P&P – at the prevailing price at time of purchase). The customer must pay any and all carriage charges. No returns of discontinued products, unless within 14 days of purchase. This policy does not affect your statutory rights and does not refer to faulty goods.

R&G

Unit 1, Shelley's Lane, East Worldham, Alton, Hampshire, GU34 3AQ
Tel: +44 (0)1420 89007 www.rg-racing.com Email: info@rg-racing.com



NOTICE DE MONTAGE POUR OCG0063PRO
PROTECTION REFROIDISSEUR D'HUILE



CE KIT CONTIENT LES ARTICLES ILLUSTRÉS ET ÉTIQUETES SUR LA PAGE.

CERTAINES PARTIES PEUVENT ÊTRE PRÉSENTES UNIQUEMENT POUR LA CLARTÉ DES INSTRUCTIONS.

NE PAS PROCÉDER AU MONTAGE TANT QUE VOUS N'ÊTES PAS SÛR QUE TOUTES LES PIÈCES SOIENT PRÉSENTES.

VEUILLEZ LIRE TOUTES LES INSTRUCTIONS AVANT DE CONTINUER.

EN CAS DE DOUTE LORS DU MONTAGE DE NOS PRODUITS, CONSULTEZ UN DE NOS REVENDUEURS OU FAITES APPEL À UN TECHNICIEN QUALIFIÉ.

VEUILLEZ NOTER QUE LA FAÇON DONT LE KIT EST EMBALLÉ NE REPRÉSENTE PAS NECESSAIREMENT LA MANIÈRE DE LE MONTER SUR LA MOTO.

SI DES RONDELLES EN CAOUTCHOUC SONT UTILISÉES POUR MAINTENIR LES COMPOSANTS SUR LES BOULONS, ELLES PEUVENT ÊTRE JETÉES.

NOTICE DISPONIBLE AU TÉLÉCHARGEMENT SUR :

WWW.RG-RACING.COM

R&G

Unit 1, Shelley's Lane, East Worldham, Alton, Hampshire, GU34 3AQ
Tel: +44 (0)1420 89007 www.rg-racing.com Email: info@rg-racing.com

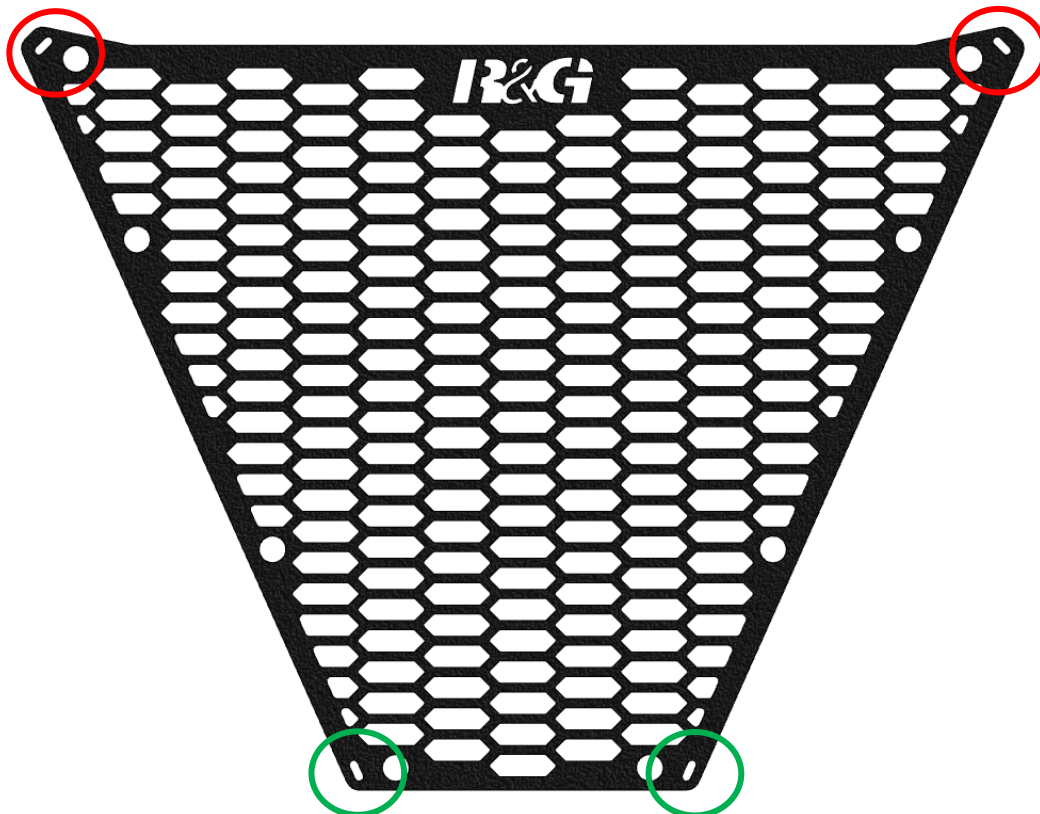


OUTILS REQUIS	VALEURS DE SERRAGE
<ul style="list-style-type: none"> Outils de démontage de carénage (si besoin) <ul style="list-style-type: none"> Coupe câble. 	M4 BOULON = 8Nm M5 BOULON = 12Nm M6 BOULON = 15Nm M8 BOULON = 20Nm M10 BOULON = 40Nm M12 BOULON = 40Nm

LÉGENDE

ARTICLE NO.	DESCRIPTION	QTÉ
ARTICLE 1	PROTECTION REFROIDISSEUR D'HUILE (OCG0063)	1
ARTICLE 2	RB0015 ŒILLET EN CAOUTCHOUC	8
ARTICLE 3	2.5mm COLLIERS DE SERRAGE	4
ARTICLE 4	CT130 COLLIERS DE RADIATEUR (PACK DE 4)	1

Schéma d'assemblage



R&G

Unit 1, Shelley's Lane, East Worldham, Alton, Hampshire, GU34 3AQ
Tel: +44 (0)1420 89007 www.rg-racing.com Email: info@rg-racing.com



PHOTO 1

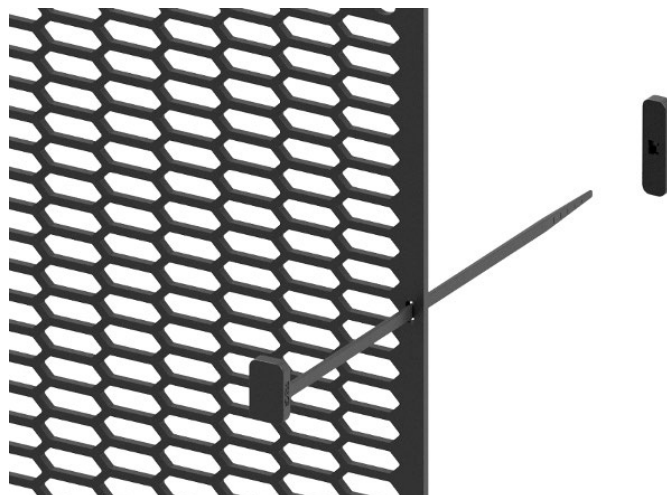
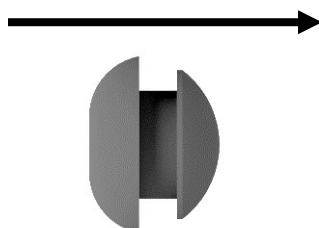


PHOTO 2

NOTICE DE MONTAGE

- Retirez le carénage et le carter inférieur de la moto (le cas échéant).
- Installez les bouchons en caoutchouc (article 2) fournis dans les 8 trous situés sur les bords de la protection du refroidisseur d'huile (article 1), ils se placeront entre le refroidisseur d'huile et la protection du refroidisseur d'huile conformément au schéma :

AVANT DE LA PROTECTION



- En haut de la protection, passez un serre-câble (article 3) de chaque côté à travers les supports de serre-câble de protection du radiateur entourés en ROUGE sur le schéma d'assemblage et faites une boucle autour des supports supérieurs du refroidisseur d'huile pour fixer le haut de la protection du refroidisseur d'huile.
- Passez 2 serre-câbles de radiateur R&G fournis (article 4) à travers les fentes entourées en VERT sur le schéma d'assemblage, en veillant à faire passer les serre-câbles à travers le bord extérieur du cadre du refroidisseur d'huile comme indiqué sur la photo 1 (et non entre les ailettes de la matrice de refroidissement).
- Fixez le serre-câble du radiateur avec la pièce de support derrière le radiateur comme indiqué sur la photo 2, en vous assurant que les dents s'engagent dans le serre-câble du radiateur et que la pièce de support repose contre l'arrière du refroidisseur d'huile pour maintenir la protection en place.
- Coupez l'excédent des 4 attaches de fixation.
- Remontez tous les panneaux de carénage et de carrosserie comme précédemment.
- Assurez-vous que les serre-câbles soient bien serrés avant de rouler. Vérifiez régulièrement le serrage des serre-câbles, par exemple pendant le nettoyage.
- Des serre-câbles de rechange sont fournis pour le retrait et le remontage de la protection si nécessaire.

ISSUE 1 25/09/2024 (DM)

**CONSUMER NOTICE**

The catalogue description and any exhibition of samples are only broad indications of the Products and R&G may make design changes which do not diminish their performance or visual appeal and supplying them in such state shall conform to the order. The Buyer acknowledges no representation or warranty (other than as to title) has been given or will apply to the Products other than those in R&G's order or confirmation and the Buyer confirms it has chosen the Products as being of merchantable quality and suitable for its particular purposes. Where R&G fits the Products or undertakes other services it shall exercise reasonable skill and care and rectify any fault free of charge unless the workmanship has been disturbed. The Buyer is responsible for ensuring that the warranty on the motorcycle is not affected by the fitting of the Products. On return of any defective Products R&G shall at its option either supply a replacement or refund the purchase money but shall not be liable if the Products have been modified or used or maintained otherwise than in accordance with R&G's or manufacturer's instructions and good engineering practice or if the defect arises from accident or neglect. Other than identified above and subject to R&G not limiting its liability for causing death and personal injury, it shall not be liable for indirect or consequential loss and otherwise its liability shall be limited to the amounts paid by the Buyer for the Products or the fitting or service concerned. These terms do not affect the Buyer's statutory rights.

R&G RETURNS POLICY (NON-FAULTY GOODS)

Returns must be pre-authorized (if not pre-authorized the return will be rejected). Goods may only be returned direct to us if they were purchased direct from us (customer must prove if necessary). Otherwise to be returned to original vendor. Goods must be in re-sellable condition, in the opinion of R&G. All returns are subject to a 25% restocking and handling fee (25% of the gross value exc. P&P – at the prevailing price at time of purchase). The customer must pay any and all carriage charges. No returns of discontinued products, unless within 14 days of purchase. This policy does not affect your statutory rights and does not refer to faulty goods.

R&G

Unit 1, Shelley's Lane, East Worldham, Alton, Hampshire, GU34 3AQ
Tel: +44 (0)1420 89007 www.rg-racing.com Email: info@rg-racing.com