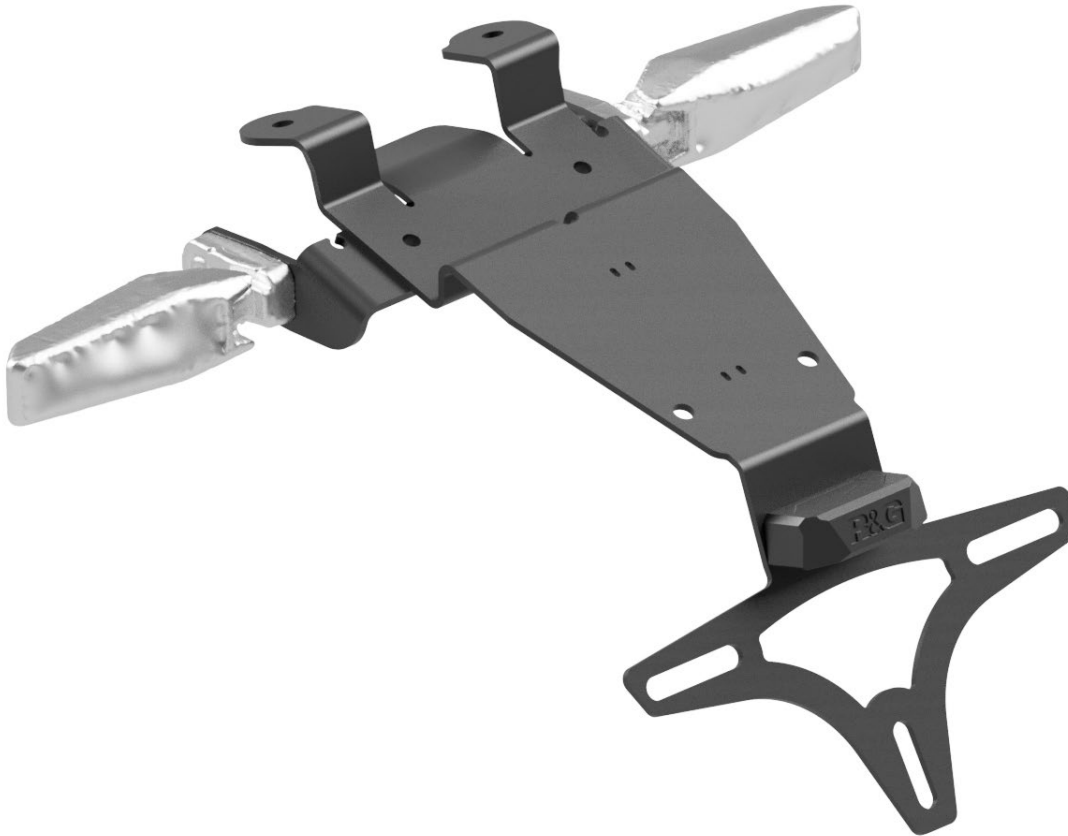




FITTING INSTRUCTIONS FOR LP0405 LICENCE PLATE BRACKET



This kit contains the items pictured and labelled over page.

Some parts may be shown for clarity of instructions only.

Do not proceed until you are sure all parts are present.

Please read all instructions before proceeding.

**IF IN ANY DOUBT WHEN FITTING OUR PRODUCTS, CONSULT ONE OF OUR DEALERS
OR HAVE FITTED BY A QUALIFIED TECHNICIAN.**

Please note that the way the kit is packed does not necessarily represent the way of mounting to the bike.

In the event of rubber washers being used to hold components onto bolts, these rubber washers can be thrown away.



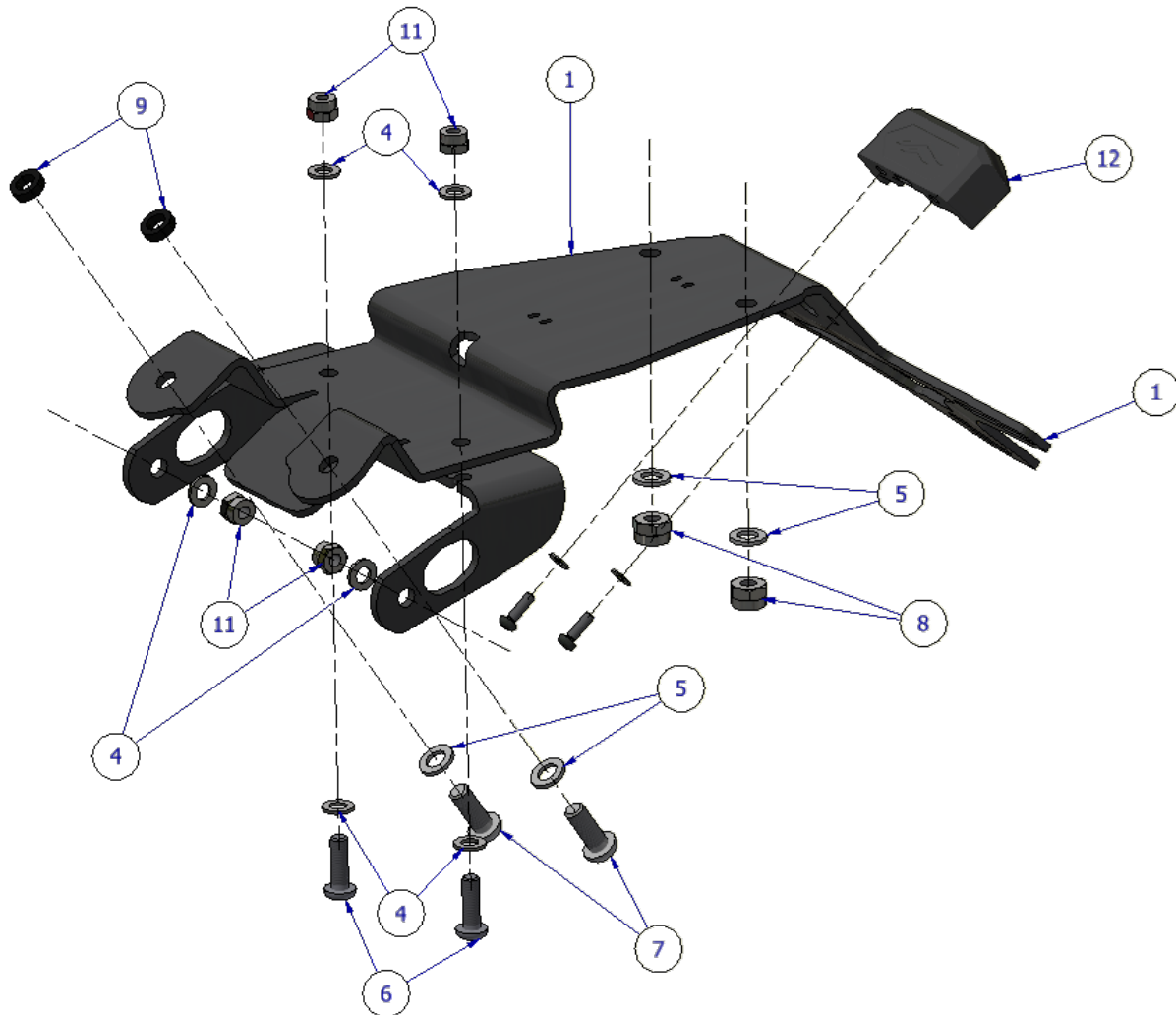
<u>TOOLS REQUIRED</u>	<u>GENERAL TORQUE SETTINGS</u>
<ul style="list-style-type: none"> Set of metric Hex keys to include 5mm. Set of metric sockets and wrench. To include 8mm, 10mm & 12mm. <ul style="list-style-type: none"> Cable cutters Phillips screwdriver 	M4 BOLT = 8Nm M5 BOLT = 12Nm M6 BOLT = 15Nm M8 BOLT = 20Nm M10 BOLT = 40Nm M12 BOLT = 40Nm

LEGEND

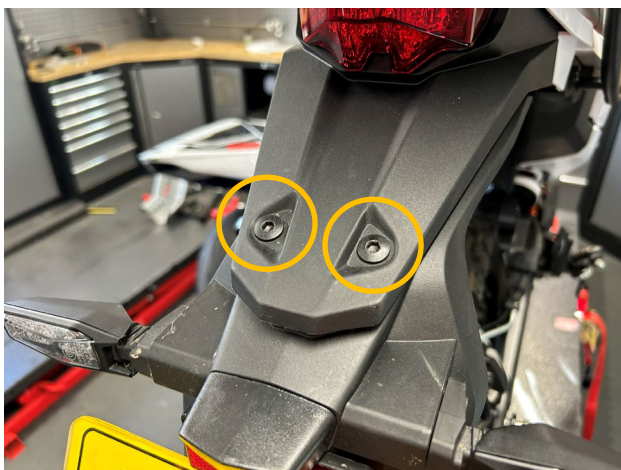
ITEM No.	DESCRIPTION	QTY
ITEM 1	TAIL TIDY BRACKET (TB0405 PART 1)	1
ITEM 2	INDICATOR BRACKET (TB0405 PART 2)	1
ITEM 3	3mm SPACER (S1639)	2
ITEM 4	LICENSE PLATE ILLUMINATOR INCLUDING BOLTS & SPACERS (LA0012)	1
ITEM 5	LICENSE PLATE ILLUMINATOR CONNECTOR (CON0013)	1
ITEM 6	M6 x 16mm BOLT	2
ITEM 7	M6 WASHER	4
ITEM 8	M6 NUT	2
ITEM 9	M5 x 16mm BOLT	2
ITEM 10	M5 WASHER	6
ITEM 11	M5 NUT	4
ITEM 12	200mm LENGTH OF HEAT SHRINK	1
ITEM 13	100mm LENGTH OF HEAT SHRINK	2
ITEM 14	75mm CABLE TIE	3



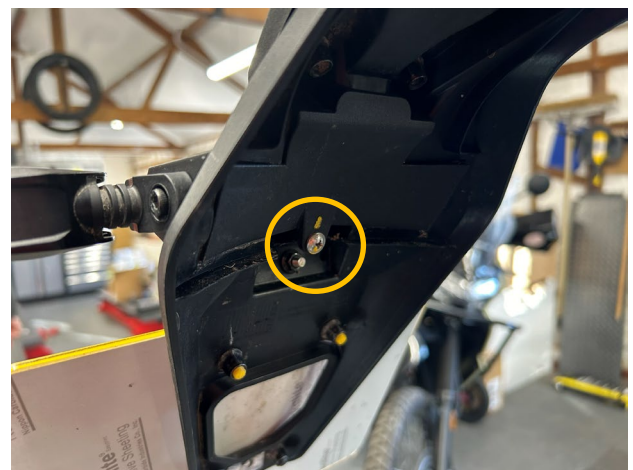
Assembly Diagram



FITTING PICTURES



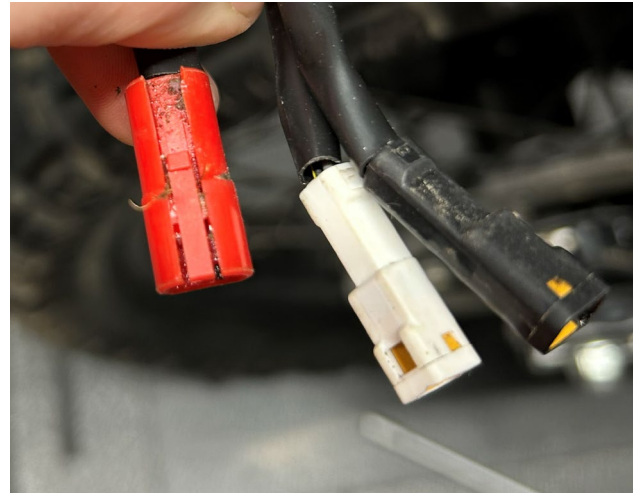
Picture 1



Picture 2



Picture 3



Picture 4

FITTING GUIDE

Disassembly Instructions:

- Remove the 2 black bolts circled in **Picture 1** and keep them for re-use later.
- Remove the Phillips screw circled in **Picture 2**, this will allow you to remove the black plastic wiring cover. You can now disconnect the three connectors shown in **Picture 4**.
- Now remove the 2 bolts circled in **Picture 3** while supporting the tail unit assembly to prevent it falling.
- Remove the indicators from the OEM tail unit. There is one bolt per indicator that needs to be removed, keep these for re-use.

Assembly Instructions:

- Attach the indicator bracket (**Item 2**) to the main bracket (**Item 1**) using 2x of the M5 bolts, 4x M5 washers and 2x M5 nuts (**Items 9, 10 & 11**) as shown in the **Assembly Diagram**.
- Using the supplied 100mm heat shrink (**Item 13**), cover the indicator wires and secure them to the indicator bracket using the original bolts, 2x M5 washers & 2x M5 nuts (**Items 10 & 11**). Fit the wires in the small cutouts on each side of the indicator bracket.
- Then fit the license plate light (**Item 4**) to the main bracket (**Item 1**) and attach the license plate illuminator connector (**Item 5**) to the illuminator wires. **Please use the supplied spacers & bolts to ensure the light clears any plate frame installed and fully illuminates the number plate.**
- Using the 200mm heat shrink (**Item 12**) cover the wires and thread them through



the hole in the main bracket, securing the wire to the underside using the small cutouts and supplied cable ties (**Item 14**).

Fitting Instructions:

- Fit the license plate connector and indicators to the OEM wiring harness.
- Test the indicators and license plate illuminator to ensure they are working correctly, if not the connectors may need to be swapped around.
- While pushing the wiring through the undertray into the bike, hold the tail tidy assembly in place and using the 2x M6 bolts, 2x M6 washers and 3mm spacers (**Items 6, 7 and 3**), attach the front of the tail tidy assembly to the underside of the tail unit as shown in the assembly diagram.
- Using the OEM bolts removed earlier, remaining M6 washers and 2x M6 nuts (**Items 7 & 8**), attach the rear of the tail tidy assembly to the tail unit through the original mounting holes (circled in **Picture 1**).
- Fully tighten the bolts to their required torque.

IMPORTANT: FOR SAFETY, ENSURE THE LICENCE PLATE IS PLACED AS HIGH AS POSSIBLE ON THE TAIL TIDY (IT MAY REQUIRE DRILLING). IF FITTING A LICENCE PLATE OF 200MM OR LONGER (INCLUDING ANY SHROUD OR REFLECTOR ATTACHMENT) TO THE BRACKET, BEFORE RIDING, FULLY COMPRESS THE SUSPENSION TO ENSURE NO PART OF THE ASSEMBLY CAN CONTACT THE TYRE WHILE THE VEHICLE IS IN MOTION OR UNDER LOAD. IT IS YOUR RESPONSIBILITY TO CHECK FOR THIS POSSIBILITY AND TAKE AVOIDING ACTION. FAILURE TO CHECK THIS COULD RESULT IN SERIOUS INJURY OR DAMAGE TO THE MOTORCYCLE.

ISSUE 2 – 14/01/2026 (MH)

CONSUMER NOTICE

The catalogue description and any exhibition of samples are only broad indications of the Products and R&G may make design changes which do not diminish their performance or visual appeal and supplying them in such state shall conform to the order. The Buyer acknowledges no representation or warranty (other than as to title) has been given or will apply to the Products other than those in R&G's order or confirmation and the Buyer confirms it has chosen the Products as being of merchantable quality and suitable for its particular purposes. Where R&G fits the Products or undertakes other services it shall exercise reasonable skill and care and rectify any fault free of charge unless the workmanship has been disturbed. The Buyer is responsible for ensuring that the warranty on the motorcycle is not affected by the fitting of the Products. On return of any defective Products R&G shall at its option either supply a replacement or refund the purchase money but shall not be liable if the Products have been modified or used or maintained otherwise than in accordance with R&G's or manufacturer's instructions and good engineering practice or if the defect arises from accident or neglect. Other than identified above and subject to R&G not limiting its liability for causing death and personal injury, it shall not be liable for indirect or consequential loss and otherwise its liability shall be limited to the amounts paid by the Buyer for the Products or the fitting or service concerned. These terms do not affect the Buyer's statutory rights.

R&G RACING RETURNS POLICY (NON-FAULTY GOODS)

Returns must be pre-authorised (if not pre-authorised the return will be rejected). Goods may only be returned direct to us if they were purchased direct from us (customer must prove if necessary). Otherwise to be returned to original vendor. Goods must be in re-sellable condition, in the opinion of R&G Racing. All returns are subject to a 25% restocking and handling fee (25% of the gross value exc. P&P – at the prevailing price at time of purchase). The customer must pay any and all carriage charges. No returns of discontinued products, unless within 14 days of purchase. This policy does not affect your statutory rights and does not refer to faulty goods.