



FITTING INSTRUCTIONS FOR LP0381BK TAIL TIDY



**This kit contains the items pictured and labelled over page.
Some parts may be shown for clarity of instructions only.
Do not proceed until you are sure all parts are present.
Please read all instructions before proceeding.**

**IF IN ANY DOUBT WHEN FITTING OUR PRODUCTS, CONSULT ONE OF OUR DEALERS OR
HAVE FITTED BY A QUALIFIED TECHNICIAN.**

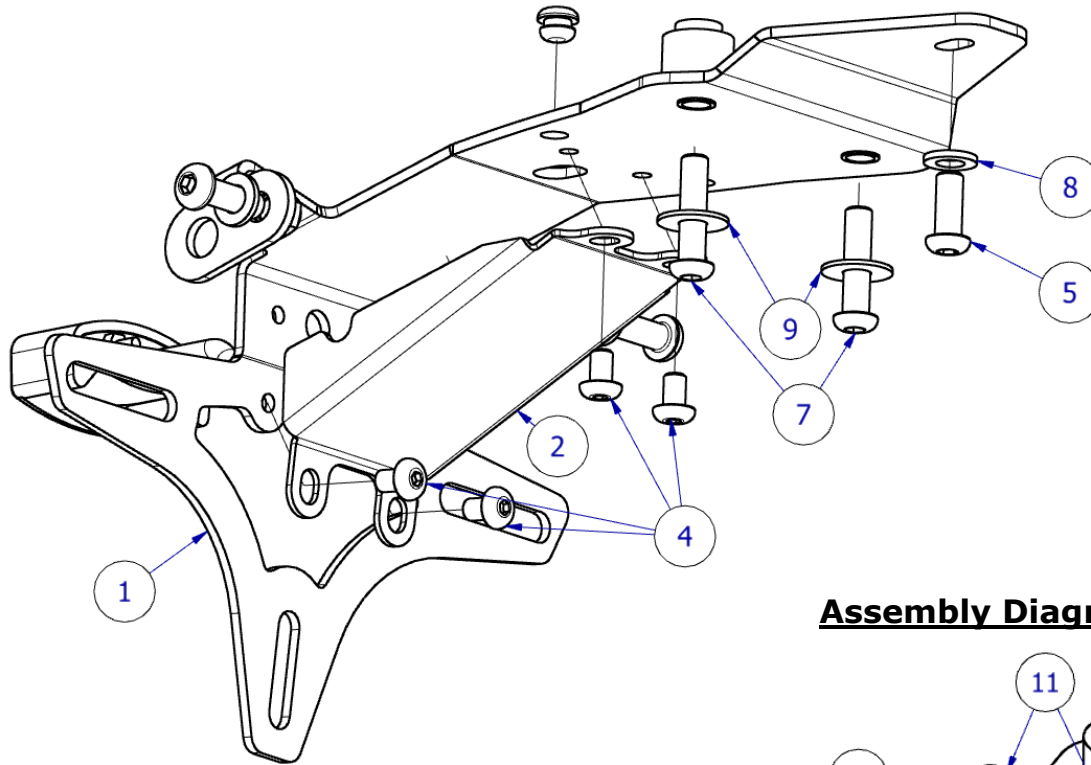
Please note that the way the kit is packed does not necessarily represent the way of mounting to the bike.

In the event of rubber washers being used to hold components onto bolts, these rubber washers can be thrown away.

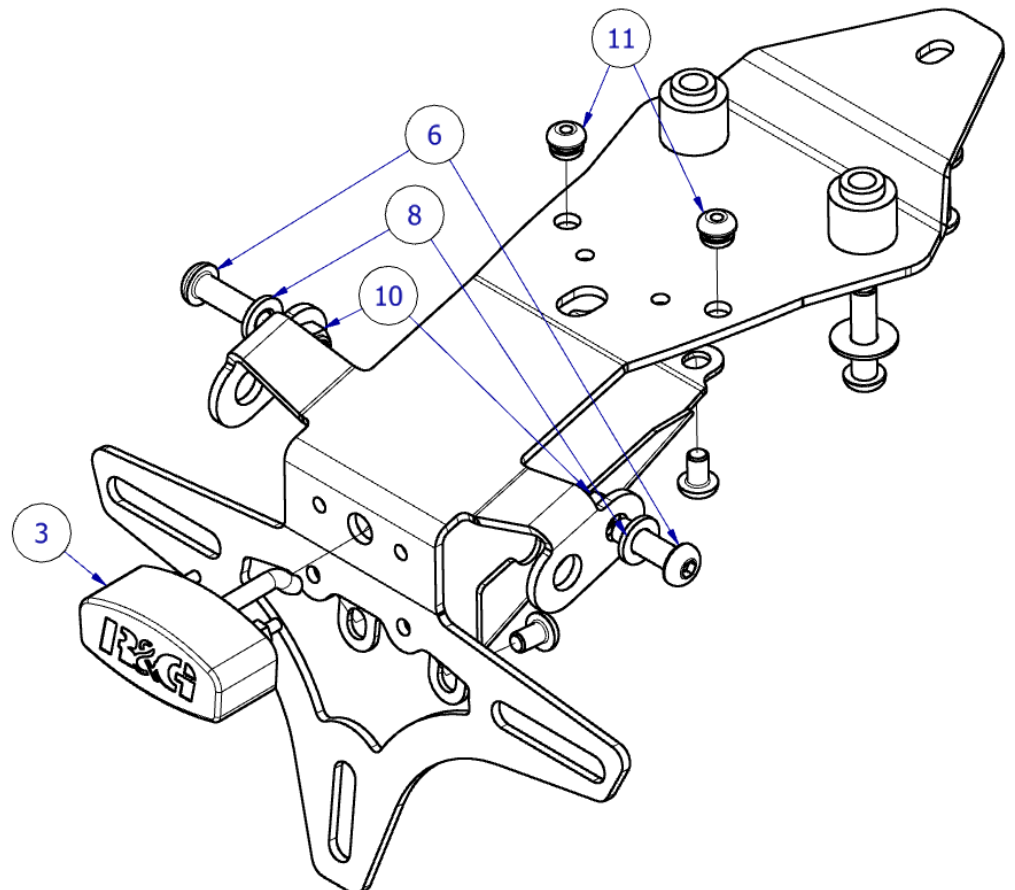
**DIGITAL COPIES OF THESE INSTRUCTIONS ARE AVAILABLE FROM
WWW.RG-RACING.COM**



Assembly Diagram 1



Assembly Diagram 2



R&G



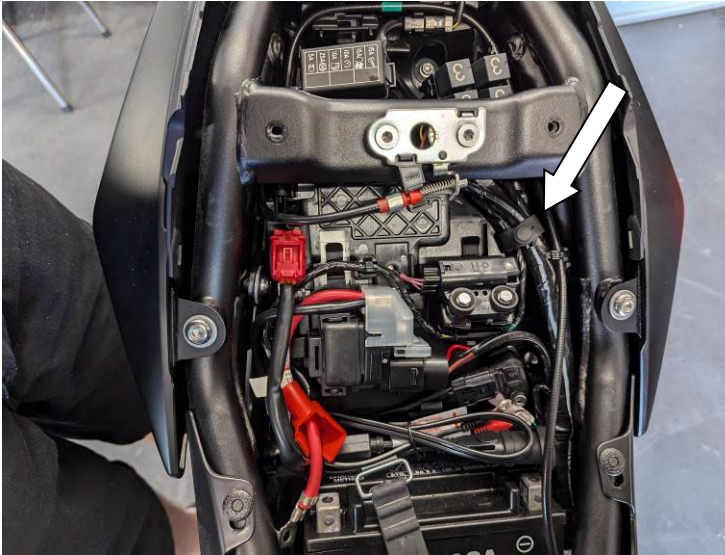
LEGEND

ITEM No.	DESCRIPTION	QTY
ITEM 1	TB0381 PART 1 ASSEMBLY	1
ITEM 2	TB0381 PART 2 COVER PLATE	1
ITEM 3	LA0002 – LICENCE PLATE ILLUMINATOR	1
ITEM 4	M5X5MM BUTTON HEAD BOLT	4
ITEM 5	M6X15MM BUTTON HEAD BOLT	1
ITEM 6	M6X20MM BUTTON HEAD BOLT	2
ITEM 7	M6X30MM BUTTON HEAD BOLT	2
ITEM 8	M6x12MM O/D WASHER	7
ITEM 9	M6x20MM O/D WASHER	2
ITEM 10	M6 NYLOC NUT	4
ITEM 11	RB0015 RUBBER BUNG	2
ITEM 12	HEAT SHRINK 150MM LENGTH	3
ITEM 13	100MM CABLE TIES	3
ITEM 14	LICENCE PLATE LIGHT CONNECTOR – CON0014	1
ITEM 15	REFLECTOR	1

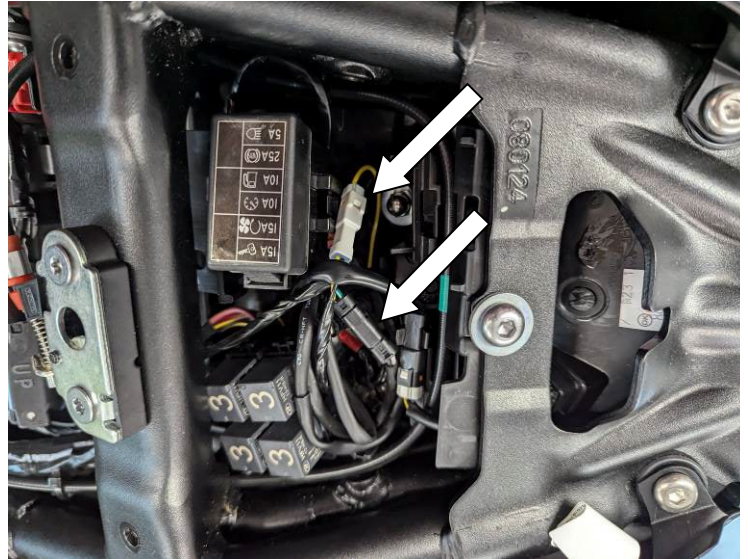
<u>TOOLS REQUIRED</u>	<u>GENERAL TORQUE SETTINGS</u>
<ul style="list-style-type: none"> • T25 Torx tool • 6mm + 10mm sockets or spanners • Small amount of superglue or similar adhesive <ul style="list-style-type: none"> • Electrical wire crimps • Small flat bladed screw driver • Loctite or similar thread locker 	<p>M4 BOLT = 8Nm</p> <p>M5 BOLT = 12Nm</p> <p>M6 BOLT = 15Nm</p> <p>M8 BOLT = 20Nm</p> <p>M10 BOLT = 40Nm</p> <p>M12 BOLT = 40Nm</p>



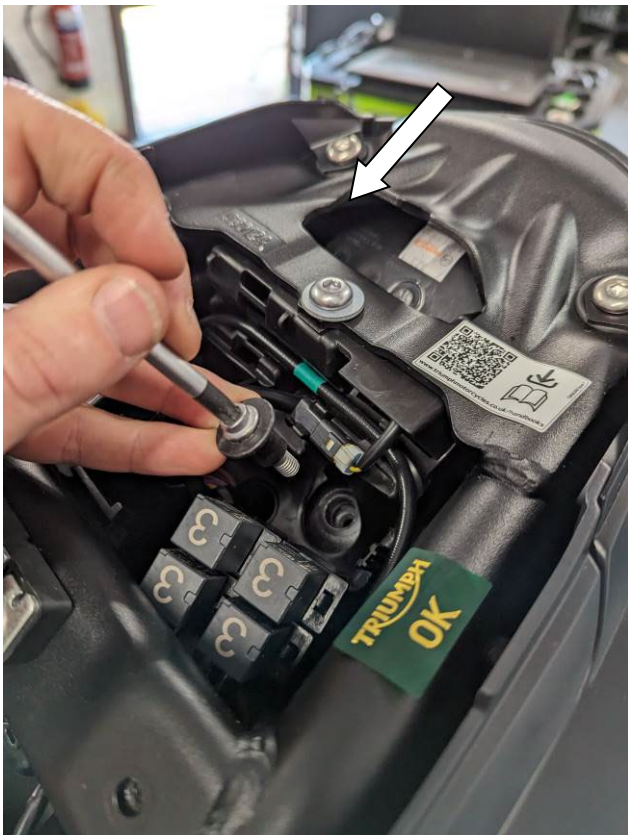
FITTING PICTURES



Picture 1



Picture 2



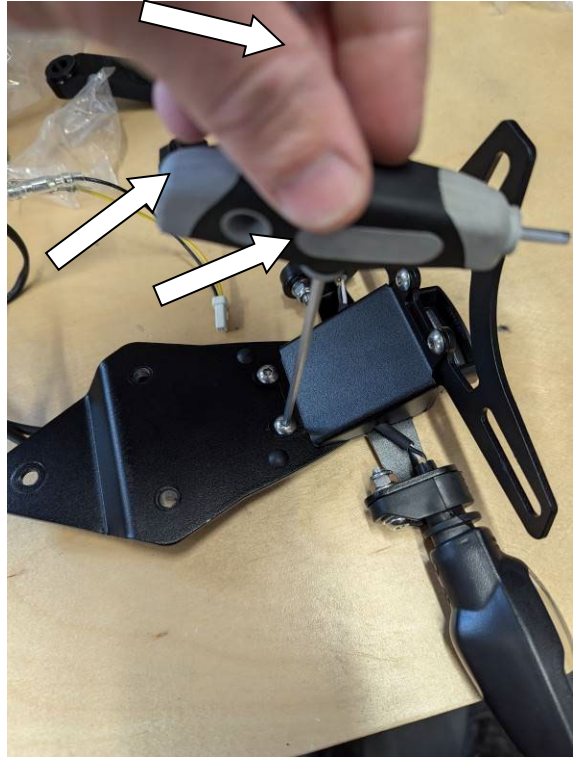
Picture 3



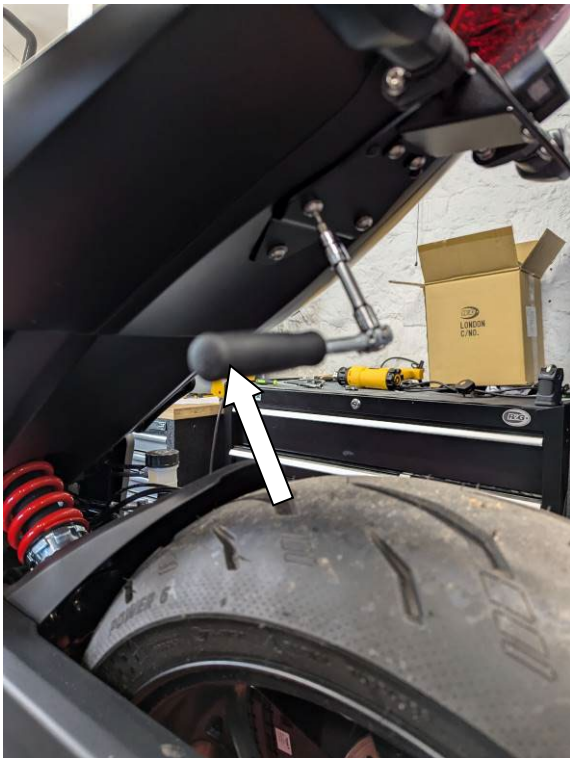
Picture 4



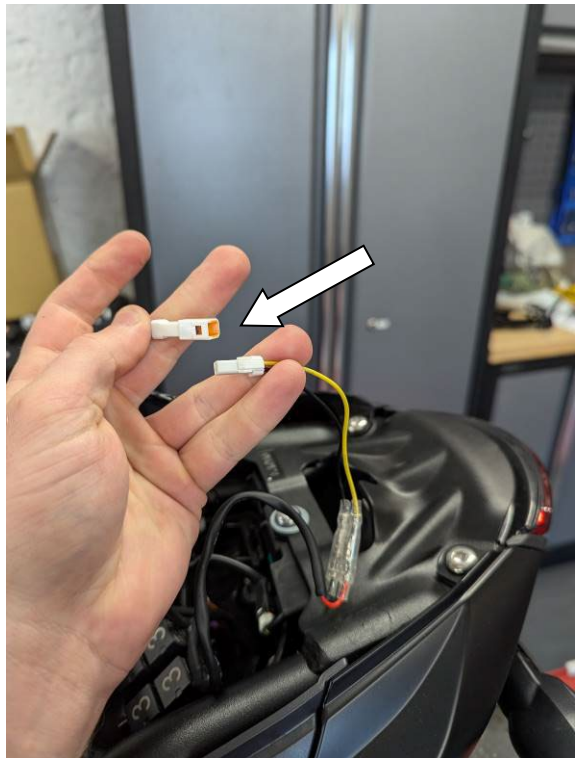
Picture 5



Picture 6



Picture 7



Picture 8



FITTING INSTRUCTIONS

- Remove the rear pillion seat or seat cowl.
- Remove any rubber straps or cable ties holding the indicator and licence plate light connectors in place.
- Inside the tail unit, locate the connections for the OEM indicators and licence plate light as shown in **Pictures 1 & 2** and disconnect.
- While supporting the OEM licence plate hanger, remove the two bolts holding the tail unit to the inside of the tail unit as shown in **picture 3**.
- Remove the last bolt from the underside of the tail unit and carefully remove the OEM licence plate unit threading the loose connectors through the opening of the tail unit.
- Disassemble the OEM licence plate unit by removing the back screws holding 2 pieces together.
- Disconnect the licence plate light connector and remove the loom from the unit for re-use as shown in **picture 4**.
- If re-using, remove the OEM indicators from the unit, noting which side connects to the corresponding connector on the sub-loom.

R&G Tail Tidy Assembly

- Cover the licence plate light (**LA0002 – item 3**) wires in heat shrink (**item 12**) and heat to seal the wires together before using the M4 nuts and washers provided with the licence plate illuminator assembly to fix to the tail bracket (**Item 1**) as shown in Assembly Drawing 1 on page 2 and use the 6mm socket to secure the nuts.
- Assemble the R&G tail tidy as shown in the Assembly Diagram on pages 1 & 2, ensuring to pass the indicator wires & replacement licence plate light through the cover plate and through the hole on **part 1** as shown in **picture 5**.
- If not already fitted, affix the LA0002 light shroud to the light assembly using a small amount of adhesive, this shroud will help direct the light towards the licence plate once fitted.
- Ensure to fit the rubber bungs (**item 11**) into the holes shown with the larger side facing up (these will sit against the bike tail unit)
- The OEM indicator assembly will fit to the R&G tail tidy in the same way as they were removed. Attach the indicators by threading the wires through the tail bracket (**TB0381 - Item 1**). And fix using the m6x 20mm bolts (**item 6**) M6 washers (**item 8**) and 2 x nyloc nuts (**item 10**).
- Affix the cover plate (**item 2**) using the M5 button head bolts (**item 4**). Ensure the indicator wires pass through the gaps left in the side of the cover plate. The wiring should resemble the bracket shown in **picture 6**.
- With the tail tidy now assembled, it can be affixed to the bike as shown in **picture 7**. Offer up to the bike and ensure the locating spacer sit into the metal subframe of the bike. *During this step, ensure the wires do not become trapped or crushed between the tail bracket and mounting bracket surfaces.*
- Push the wires through the opening in the tail unit and pass the indicator connectors and fix in place using 2 x M6x30mm bolts (**item 7**) with larger M6x20mm washers (**item 9**) per bolt. Pass the bolts through the tail tidy and tail unit and secure these bolts with an M6x12mm washer (**item 8**) and an M6 Nyloc nut (**item 10**).
- Fix the remaining mount hole on the underside of the bike using an M6x15mm bolt (**item 5**) and M6x12mm Washer (**item 8**).
- Connect the wires from the replacement licence plate light to the CON014 connector provided (**item 14**) ensuring black to black wires correspond.
- Connect the new connector to the sub-loom as shown in **picture 8**. Connect this to the main wiring loom.

R&G

Unit 1, Shelley's Lane, East Worldham, Alton, Hampshire, GU34 3AQ
Tel: +44 (0)1420 89007 www.rg-racing.com Email: info@rg-racing.com



- Ensure the indicators are connected to the correct side to the original sub loom and reconnect the connectors. *It is a good idea to test the lighting at this stage.*
- Tidy up the wiring loom and use the cable ties to place this in the space within the tail unit and clip the licence plate illuminator connector back into its locator.
- Re-fit the licence plate to the bike (it may require drilling).
- Depending on local laws, fit the reflector provided (item 12) to an appropriate location.

IMPORTANT: FOR SAFETY, ENSURE THE LICENCE PLATE IS PLACED AS HIGH AS POSSIBLE ON THE TAIL TIDY (IT MAY REQUIRE DRILLING). IF FITTING A LICENCE PLATE OF 200MM OR LONGER (INCLUDING ANY SHROUD OR REFLECTOR ATTACHMENT) TO THE BRACKET, BEFORE RIDING, FULLY COMPRESS THE SUSPENSION TO ENSURE NO PART OF THE ASSEMBLY CAN CONTACT THE TYRE WHILE THE VEHICLE IS IN MOTION OR UNDER LOAD. IT IS YOUR RESPONSIBILITY TO CHECK FOR THIS POSSIBILITY AND TAKE AVOIDING ACTION. FAILURE TO CHECK THIS COULD RESULT IN SERIOUS INJURY OR DAMAGE TO THE MOTORCYCLE.

- You can now re-fit the pillion seat.
- At this stage, test all light functionality including the licence plate illuminator before riding.

ISSUE 1 06/09/2024 (DM)

CONSUMER NOTICE

The catalogue description and any exhibition of samples are only broad indications of the Products and R&G may make design changes which do not diminish their performance or visual appeal and supplying them in such state shall conform to the order. The Buyer acknowledges no representation or warranty (other than as to title) has been given or will apply to the Products other than those in R&G's order or confirmation and the Buyer confirms it has chosen the Products as being of merchantable quality and suitable for its particular purposes. Where R&G fits the Products or undertakes other services it shall exercise reasonable skill and care and rectify any fault free of charge unless the workmanship has been disturbed. The Buyer is responsible for ensuring that the warranty on the motorcycle is not affected by the fitting of the Products. On return of any defective Products R&G shall at its option either supply a replacement or refund the purchase money but shall not be liable if the Products have been modified or used or maintained otherwise than in accordance with R&G's or manufacturer's instructions and good engineering practice or if the defect arises from accident or neglect. Other than identified above and subject to R&G not limiting its liability for causing death and personal injury, it shall not be liable for indirect or consequential loss and otherwise its liability shall be limited to the amounts paid by the Buyer for the Products or the fitting or service concerned. These terms do not affect the Buyer's statutory rights.

R&G RETURNS POLICY (NON-FAULTY GOODS)

Returns must be pre-authorized (if not pre-authorized the return will be rejected). Goods may only be returned direct to us if they were purchased direct from us (customer must prove if necessary). Otherwise to be returned to original vendor. Goods must be in re-sellable condition, in the opinion of R&G. All returns are subject to a 25% restocking and handling fee (25% of the gross value exc. P&P – at the prevailing price at time of purchase). The customer must pay any and all carriage charges. No returns of discontinued products, unless within 14 days of purchase. This policy does not affect your statutory rights and does not refer to faulty goods.

R&G

Unit 1, Shelley's Lane, East Worldham, Alton, Hampshire, GU34 3AQ
Tel: +44 (0)1420 89007 www.rg-racing.com Email: info@rg-racing.com



NOTICE DE MONTAGE LP0381BK SUPPORT DE PLAQUE



CE KIT CONTIENT LES ARTICLES ILLUSTRÉS ET ÉTIQUETES SUR LA PAGE.

CERTAINES PARTIES PEUVENT ÊTRE PRÉSENTES UNIQUEMENT POUR LA CLARTÉ DES INSTRUCTIONS.

NE PAS PROCÉDER AU MONTAGE TANT QUE VOUS N'ÊTES PAS SÛR QUE TOUTES LES PIÈCES SOIENT PRÉSENTES.

VEUILLEZ LIRE TOUTES LES INSTRUCTIONS AVANT DE CONTINUER.

EN CAS DE DOUTE LORS DU MONTAGE DE NOS PRODUITS, CONSULTEZ UN DE NOS REVENDEURS OU FAITES APPEL À UN TECHNICIEN QUALIFIÉ.

VEUILLEZ NOTER QUE LA FAÇON DONT LE KIT EST EMBALLÉ NE REPRÉSENTE PAS NECESSAIREMENT LA MANIÈRE DE LE MONTER SUR LA MOTO.

SI DES RONDELLES EN CAOUTCHOUC SONT UTILISÉES POUR MAINTENIR LES COMPOSANTS SUR LES BOULONS, ELLES PEUVENT ÊTRE JETÉES.

NOTICE DISPONIBLE AU TÉLÉCHARGEMENT SUR :
WWW.RG-RACING.COM



Schéma d'assemblage 1

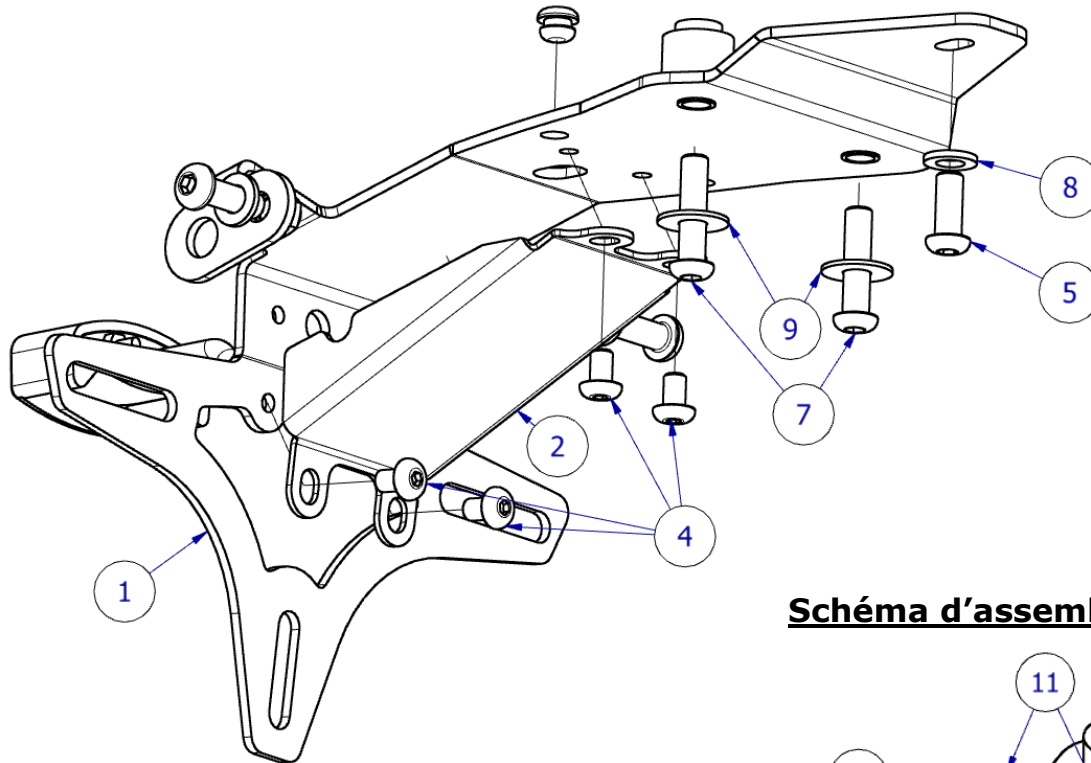
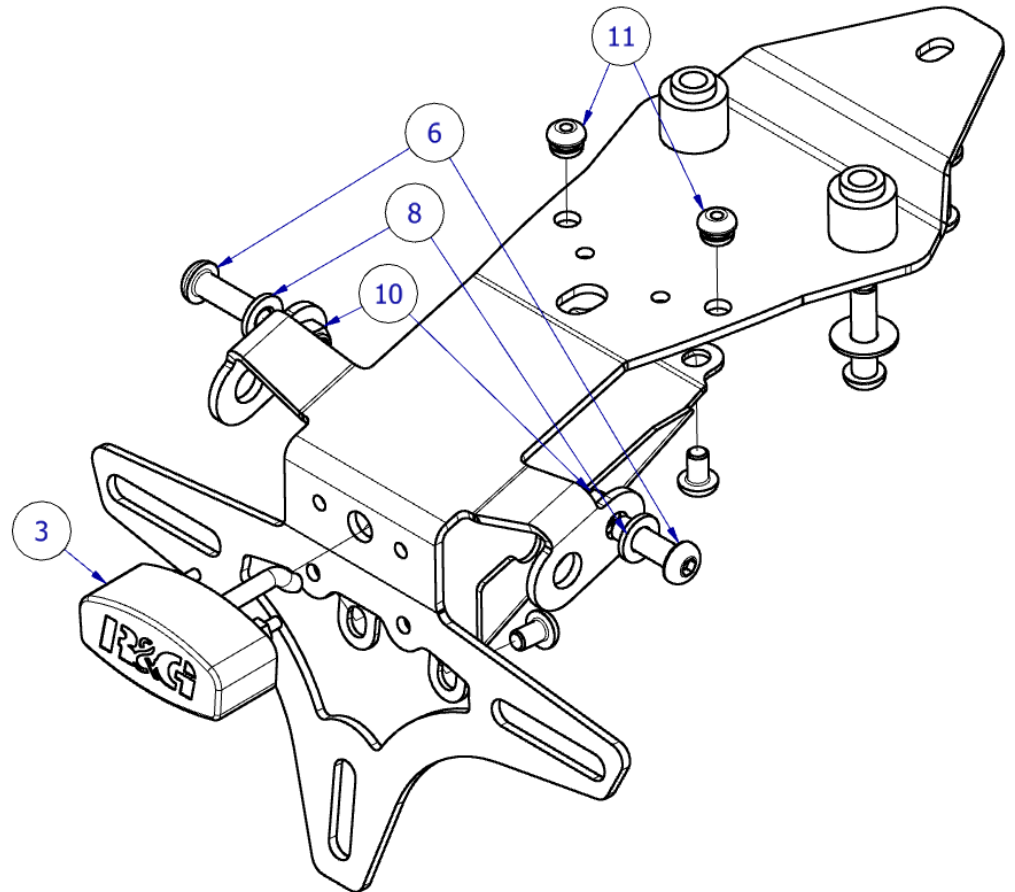


Schéma d'assemblage 2



R&G



LÉGENDE

ARTICLE No.	DESCRIPTION	QTÉ
ARTICLE 1	TB0381 PARTIE 1 ASSEMBLAGE	1
ARTICLE 2	TB0381 PART 2 PLAQUE DE COUVERTURE	1
ARTICLE 3	LA0002 - FEU DE PLAQUE	1
ARTICLE 4	M5X5MM BOULON	4
ARTICLE 5	M6X15MM BOULON	1
ARTICLE 6	M6X20MM BOULON	2
ARTICLE 7	M6X30MM BOULON	2
ARTICLE 8	M6x12MM RONDELLE	7
ARTICLE 9	M6x20MM RONDELLE	2
ARTICLE 10	M6 ÉCROU	4
ARTICLE 11	RB0015 BOUCHON EN CAOUTCHOUC	2
ARTICLE 12	MANCHON RÉTRACTABLE 150MM DE LONG	3
ARTICLE 13	100MM COLLIERS DE SERRAGE	3
ARTICLE 14	CONNECTEUR DE FEU DE PLAQUE - CON0014	1
ARTICLE 15	RÉFLECTEUR	1

<u>OUTILS REQUIS</u>	<u>VALEURS DE SERRAGE</u>
<ul style="list-style-type: none"> • Outil Torx T25 • Clé à cliquet + douilles 6mm + 10mm • Un peu de superglue ou similaire <ul style="list-style-type: none"> • Pinces fils électriques • Petit tournevis à lame plate • Loctite ou frein-filet similaire 	M4 BOULON = 8Nm M5 BOULON = 12Nm M6 BOULON = 15Nm M8 BOULON = 20Nm M10 BOULON = 40Nm M12 BOULON = 40Nm



PHOTOS DE MONTAGE

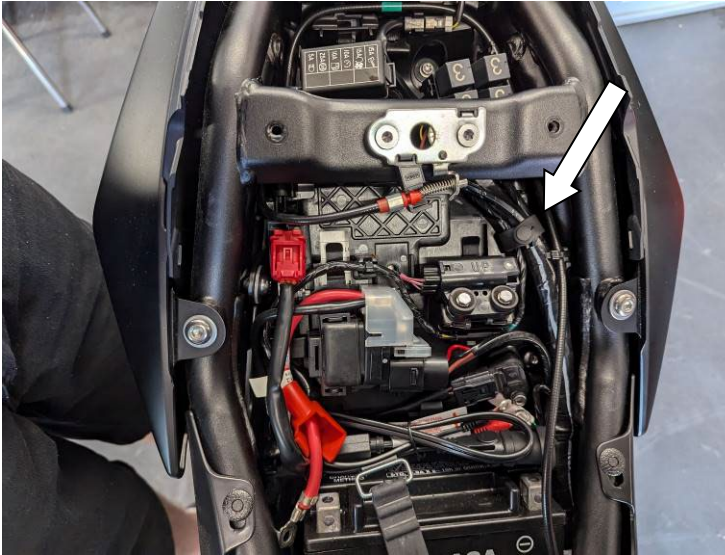


Photo 1

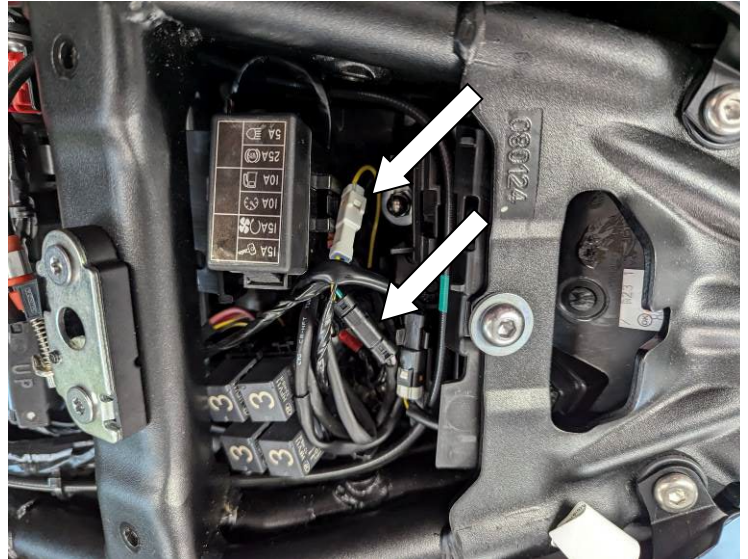


Photo 2

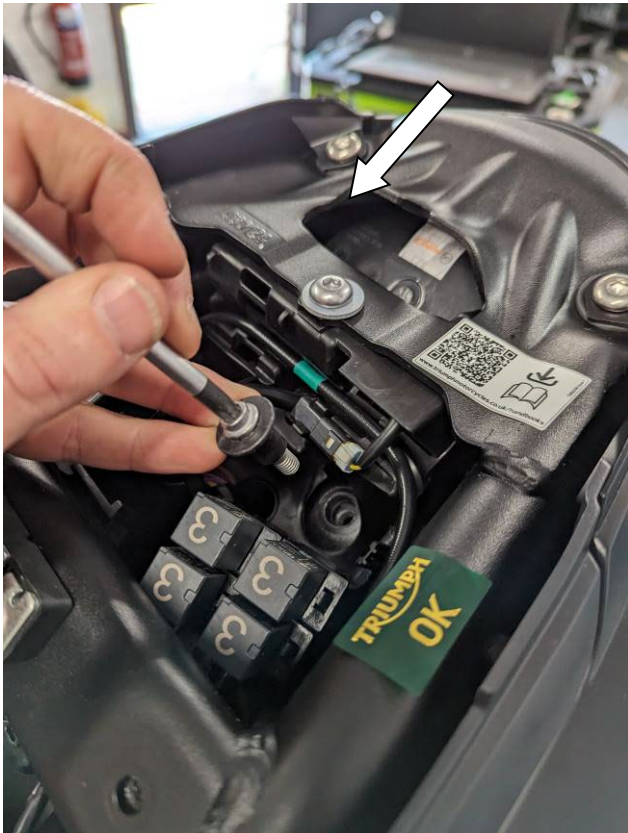


Photo 3

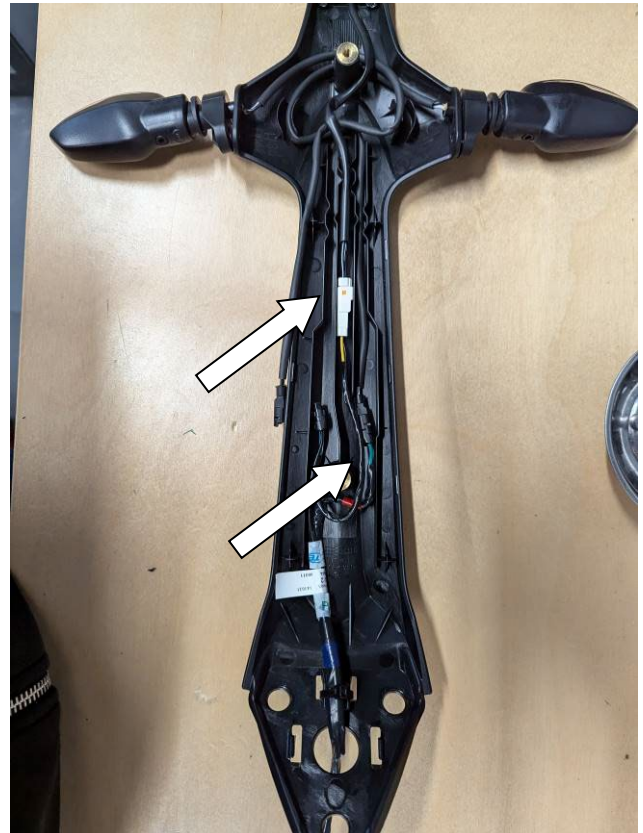


Photo 4



Photo 5

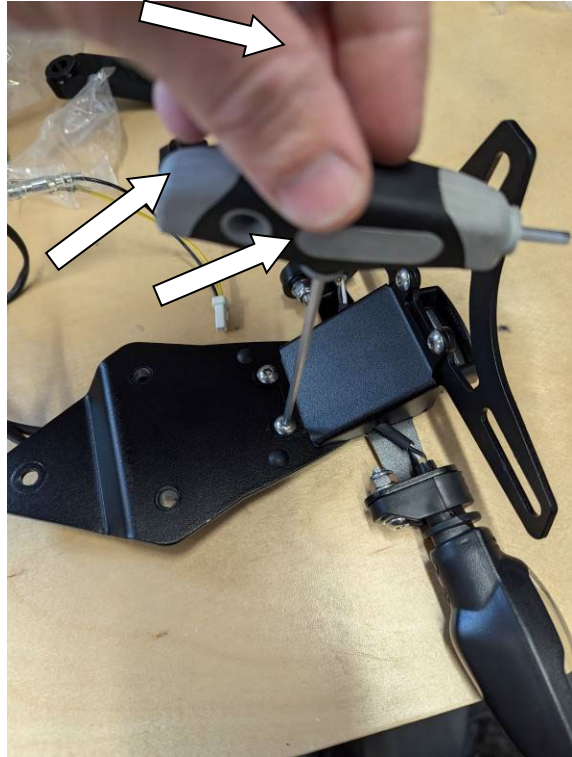


Photo 6

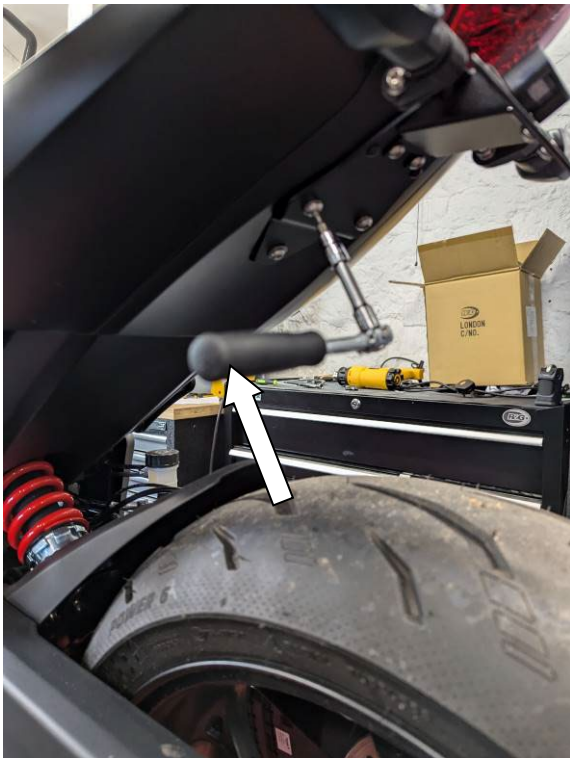


Photo 7

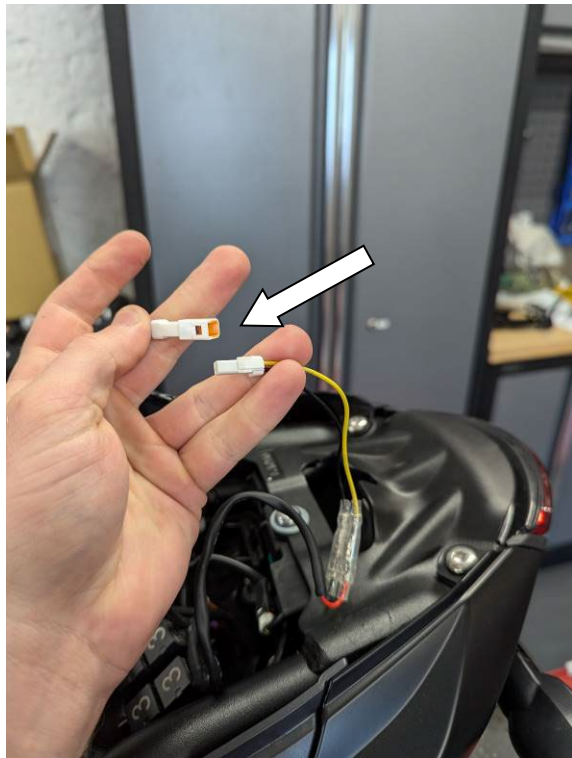


Photo 8



NOTICE DE MONTAGE

- Retirez le siège passager arrière ou le capot de selle.
- Retirez les sangles en caoutchouc ou les attaches de câble qui maintiennent les connecteurs des clignotants et de l'éclairage de la plaque d'immatriculation en place.
- À l'intérieur de l'unité arrière, localisez les connexions des clignotants d'origine et de l'éclairage de la plaque d'immatriculation comme indiqué sur les photos 1 et 2 et déconnectez-les.
- Tout en soutenant le support de plaque d'immatriculation d'origine, retirez les deux boulons qui maintiennent l'unité arrière à l'intérieur de l'unité arrière comme indiqué sur la photo 3.
- Retirez le dernier boulon du dessous de l'unité arrière et retirez soigneusement l'unité de plaque d'immatriculation d'origine en enfilant les connecteurs desserrés à travers l'ouverture de l'unité arrière.
- Démontez l'unité de plaque d'immatriculation d'origine en retirant les vis arrière qui maintiennent les 2 pièces ensemble.
- Débranchez le connecteur de l'éclairage de la plaque d'immatriculation et retirez le faisceau de l'unité pour le réutiliser comme indiqué sur la photo 4.
- En cas de réutilisation, retirez les clignotants d'origine de l'unité, en notant le côté qui se connecte au connecteur correspondant sur le faisceau secondaire.

Assemblage de support R&G

- Couvrez les fils de l'éclairage de la plaque d'immatriculation (LA0002 - article 3) avec de la gaine thermorétractable (article 12) et chauffez pour sceller les fils ensemble avant d'utiliser les écrous et rondelles M4 fournis avec l'ensemble d'éclairage de la plaque d'immatriculation pour le fixer au support arrière (article 1) comme indiqué sur le schéma d'assemblage 1 à la page 2 et utilisez la douille de 6 mm pour fixer les écrous.
- Assemblez le support arrière R&G comme indiqué sur le schéma d'assemblage aux pages 1 et 2, en veillant à faire passer les fils des clignotants et l'éclairage de plaque d'immatriculation de remplacement à travers la plaque de protection et à travers le trou de la partie 1 comme indiqué sur la photo 5.
- S'il n'est pas déjà installé, fixez le carénage d'éclairage LA0002 à l'ensemble d'éclairage à l'aide d'une petite quantité d'adhésif, ce carénage aidera à diriger la lumière vers la plaque d'immatriculation une fois installé.
- Assurez-vous d'insérer les bouchons en caoutchouc (article 11) dans les trous indiqués avec le côté le plus large vers le haut (ils seront placés contre l'unité arrière de la moto)
- L'ensemble des clignotants d'origine s'adaptera au support arrière R&G de la même manière qu'ils ont été retirés. Fixez les clignotants en enfilant les fils à travers le support arrière (TB0381 - Article 1). Et fixez-les à l'aide des boulons m6x 20 mm (article 6), des rondelles M6 (article 8) et des 2 écrous nyloc (article 10).
- Fixez la plaque de recouvrement (article 2) à l'aide des boulons à tête ronde M5 (article 4). Assurez-vous que les fils des clignotants passent à travers les espaces laissés sur le côté de la plaque de recouvrement. Le câblage doit ressembler au support montré sur la photo 6.
- Une fois le support arrière assemblé, il peut être fixé à la moto comme indiqué sur la photo 7. Présentez-le sur la moto et assurez-vous que l'entretoise de positionnement s'insère dans le sous-châssis métallique de la moto. Au cours de cette étape, assurez-vous que les fils ne restent pas coincés ou écrasés entre le support et les surfaces du support de montage.
- Poussez les fils à travers l'ouverture de l'unité de support et passez les connecteurs des clignotants et fixez-les en place à l'aide de 2 boulons M6x30 mm (article 7) avec des rondelles M6x20 mm plus

R&G

Unit 1, Shelley's Lane, East Worldham, Alton, Hampshire, GU34 3AQ
Tel: +44 (0)1420 89007 www.rg-racing.com Email: info@rg-racing.com



grandes (article 9) par boulon. Faites passer les boulons à travers le support et fixez ces boulons avec une rondelle M6x12 mm (article 8) et un écrou Nyloc M6 (article 10).

- Fixez le trou de montage restant sur le dessous de la moto à l'aide d'un boulon M6x15 mm (article 5) et d'une rondelle M6x12 mm (article 8).
- Connectez les fils de l'éclairage de plaque d'immatriculation de remplacement au connecteur CON014 fourni (article 14) en vous assurant que les fils noirs correspondent.
- Connectez le nouveau connecteur au sous-faisceau comme indiqué sur la photo 8. Connectez-le au faisceau de câbles principal.
- Assurez-vous que les clignotants soient connectés du bon côté au sous-faisceau d'origine et reconnectez les connecteurs. Il est judicieux de tester l'éclairage à ce stade.
- Rangez le faisceau de câbles et utilisez les serre-câbles pour le placer dans l'espace à l'intérieur de l'unité arrière et reclipsez le connecteur de l'éclairage de la plaque d'immatriculation dans son emplacement.
- Remontez la plaque d'immatriculation sur la moto (il peut être nécessaire de percer).
- Selon les lois locales, installez le réflecteur fourni (article 12) à un emplacement approprié.

IMPORTANT : SI VOUS MONTEZ UNE PLAQUE D'IMMATRICULATION DE GRANDE TAILLE ET LA PLACEZ BIEN EN BAS SUR LE SUPPORT DE PLAQUE D'IMMATRICULATION, IL Y A UN RISQUE QUE LA PLAQUE D'IMMATRICULATION FRAPPE LA ROUE ARRIÈRE SOUS UNE CHARGE LOURDE ET SUR DE GROSSES BOSSES SUR LA ROUTE. IL EST DE VOTRE RESPONSABILITÉ DE VÉRIFIER CETTE POSSIBILITÉ ET DE PRENDRE DES MESURES POUR ÉVITER. NE PAS VÉRIFIER CELA POURRAIT ENTRAÎNER DES BLESSURES GRAVES.

- Vous pouvez maintenant remonter le siège passager.
- À ce stade, testez toutes les fonctionnalités d'éclairage, y compris l'éclairage de la plaque d'immatriculation, avant de rouler.

ISSUE 1 06/09/2024 (DM)

CONSUMER NOTICE

The catalogue description and any exhibition of samples are only broad indications of the Products and R&G may make design changes which do not diminish their performance or visual appeal and supplying them in such state shall conform to the order. The Buyer acknowledges no representation or warranty (other than as to title) has been given or will apply to the Products other than those in R&G's order or confirmation and the Buyer confirms it has chosen the Products as being of merchantable quality and suitable for its particular purposes. Where R&G fits the Products or undertakes other services it shall exercise reasonable skill and care and rectify any fault free of charge unless the workmanship has been disturbed. The Buyer is responsible for ensuring that the warranty on the motorcycle is not affected by the fitting of the Products. On return of any defective Products R&G shall at its option either supply a replacement or refund the purchase money but shall not be liable if the Products have been modified or used or maintained otherwise than in accordance with R&G's or manufacturer's instructions and good engineering practice or if the defect arises from accident or neglect. Other than identified above and subject to R&G not limiting its liability for causing death and personal injury, it shall not be liable for indirect or consequential loss and otherwise its liability shall be limited to the amounts paid by the Buyer for the Products or the fitting or service concerned. These terms do not affect the Buyer's statutory rights.

R&G RETURNS POLICY (NON-FAULTY GOODS)

Returns must be pre-authorized (if not pre-authorized the return will be rejected). Goods may only be returned direct to us if they were purchased direct from us (customer must prove if necessary). Otherwise to be returned to original vendor. Goods must be in re-sellable condition, in the opinion of R&G. All returns are subject to a 25% restocking and handling fee (25% of the gross value exc. P&P – at the prevailing price at time of purchase). The customer must pay any and all carriage charges. No returns of discontinued products, unless within 14 days of purchase. This policy does not affect your statutory rights and does not refer to faulty goods.

R&G

Unit 1, Shelley's Lane, East Worldham, Alton, Hampshire, GU34 3AQ
Tel: +44 (0)1420 89007 www.rg-racing.com Email: info@rg-racing.com