



FITTING INSTRUCTIONS FOR FP0269BK FORK PROTECTORS



This kit contains the items pictured and labelled over page.

Some parts may be shown for clarity of instructions only.

Do not proceed until you are sure all parts are present.

Please read all instructions before proceeding.

**IF IN ANY DOUBT WHEN FITTING OUR PRODUCTS, CONSULT ONE OF OUR DEALERS
OR HAVE FITTED BY A QUALIFIED TECHNICIAN.**

Please note that the way the kit is packed does not necessarily represent the way of mounting to the bike.

In the event of rubber washers being used to hold components onto bolts, these rubber washers can be thrown away.

DIGITAL COPIES OF THESE INSTRUCTIONS ARE AVAILABLE FROM

WWW.RG-RACING.COM

R&G

Unit 1, Shelley's Lane, East Worldham, Alton, Hampshire, GU34 3AQ

Tel: +44 (0)1420 89007 Fax: +44 (0)1420 87301 www.rg-racing.com Email: info@rg-racing.com

**TOOLS REQUIRED**

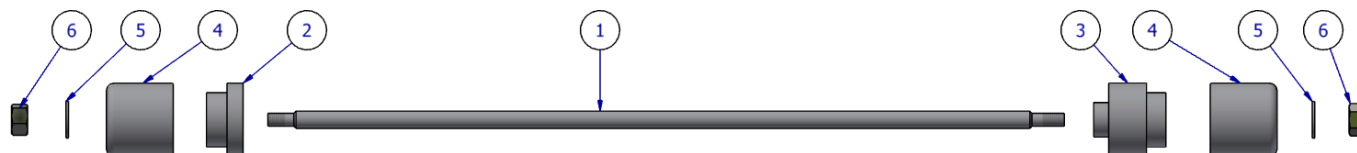
- Socket Set to Include 2 x 13mm sockets and wrenches.
- FAST DRYING SUPER GLUE MIGHT BE OF ASSISTANCE.

GENERAL TORQUE SETTINGS

M4 BOLT = 8Nm
 M5 BOLT = 12Nm
 M6 BOLT = 15Nm
 M8 BOLT = 20Nm
 M10 BOLT = 40Nm
 M12 BOLT = 40Nm

LEGEND

ITEM No.	DESCRIPTION
1	(SB041) SPINDLE BAR
2	(S1443) SPACER LHS
3	(SB1444) SPACER RHS
4	(B0445 M8) CRASH PROTECTOR BOTH SIDES
5	M8x19mm WASHER (x2)
6	M8x1.25 NYLOC NUT (x2)

ASSEMBLY DIAGRAM**VIEWPOINT FROM THE REAR OF THE MOTORCYCLE****LHS****RHS****FITTING INSTRUCTIONS**

R&G

Unit 1, Shelley's Lane, East Worldham, Alton, Hampshire, GU34 3AQ

Tel: +44 (0)1420 89007 Fax: +44 (0)1420 87301 www.rg-racing.com Email: info@rg-racing.com



1. To start this fitting process, place one of the M8 Nyloc Nuts (**ITEM 6**) onto one end of the spindle bar (**ITEM 1**) and tighten it until at least a minimum of 2 threads are through the Nyloc.

A fitting suggestion: using a small amount of Super glue on one Spindle bar thread will help create an even number of threads on both sides of the swingarm protector once fully tightened.

2. once the Nyloc is fitted, you can then slide the washer (**ITEM 5**), bobbin (**ITEM 4**) and Spacer RHS (**ITEM 3**) down the bar as shown in the **ASSEMBLY DIAGRAM**.
3. Then slide the half assembly through the righthand side of the front spindle. Once through place the Spacer LHS (**ITEM 2**), Bobbin (**ITEM 4**), Washer (**ITEM 5**) onto the spindle bar (**ITEM 1**) that's poking through the LHS.
4. Then finally place the Nyloc Nut (**ITEM 6**) and tighten to the correct torque using the **GENERAL TORQUE SETTINGS** table on **PAGE 2**.

See more R&G products for your Motorcycle in the link below:

https://www.rg-racing.com/browsebike/Aprilia/Tuareg_660

ISSUE 1 05/12/2022 (JH)

CONSUMER NOTICE

The catalogue description and any exhibition of samples are only broad indications of the Products and R&G may make design changes which do not diminish their performance or visual appeal and supplying them in such state shall conform to the order. The Buyer acknowledges no representation or warranty (other than as to title) has been given or will apply to the Products other than those in R&G's order or confirmation and the Buyer confirms it has chosen the Products as being of merchantable quality and suitable for its particular purposes. Where R&G fits the Products or undertakes other services it shall exercise reasonable skill and care and rectify any fault free of charge unless the workmanship has been disturbed. The Buyer is responsible for ensuring that the warranty on the motorcycle is not affected by the fitting of the Products. On return of any defective Products R&G shall at its option either supply a replacement or refund the purchase money but shall not be liable if the Products have been modified or used or maintained otherwise than in accordance with R&G's or manufacturer's instructions and good engineering practice or if the defect arises from accident or neglect. Other than identified above and subject to R&G not limiting its liability for causing death and personal injury, it shall not be liable for indirect or consequential loss and otherwise its liability shall be limited to the amounts paid by the Buyer for the Products or the fitting or service concerned. These terms do not affect the Buyer's statutory rights.

R&G RACING RETURNS POLICY (NON-FAULTY GOODS)

Returns must be pre-authorized (if not pre-authorized the return will be rejected). Goods may only be returned direct to us if they were purchased direct from us (customer must prove if necessary). Otherwise to be returned to original vendor. Goods must be in re-sellable condition, in the opinion of R&G Racing. All returns are subject to a 25% restocking and handling fee (25% of the gross value exc. P&P - at the prevailing price at time of purchase). The customer must pay any and all carriage charges. No returns of discontinued products, unless within 14 days of purchase. This policy does not affect your statutory rights and does not refer to faulty goods.

R&G

Unit 1, Shelley's Lane, East Worldham, Alton, Hampshire, GU34 3AQ

Tel: +44 (0)1420 89007 Fax: +44 (0)1420 87301 www.rg-racing.com Email: info@rg-racing.com



NOTICE DE MONTAGE POUR FP0269BK PROTECTIONS FOURCHE



CE KIT CONTIENT LES ARTICLES ILLUSTRÉS ET ÉTIQUETES SUR LA PAGE.

CERTAINES PARTIES PEUVENT ÊTRE PRÉSENTES UNIQUEMENT POUR LA CLARTÉ DES INSTRUCTIONS.

NE PAS PROCÉDER AU MONTAGE TANT QUE VOUS N'ÊTES PAS SÛR QUE TOUTES LES PIÈCES SOIENT PRÉSENTES.

VEUILLEZ LIRE TOUTES LES INSTRUCTIONS AVANT DE CONTINUER.

EN CAS DE DOUTE LORS DU MONTAGE DE NOS PRODUITS, CONSULTEZ UN DE NOS REVENEURS OU FAITES APPEL A UN TECHNICIEN QUALIFIÉ.

VEUILLEZ NOTER QUE LA FAÇON DONT LE KIT EST EMBALLÉ NE REPRÉSENTE PAS NECESSAIREMENT LA MANIÈRE DE LE MONTER SUR LA MOTO.

SI DES RONDELLES EN CAOUTCHOUC SONT UTILISÉES POUR MAINTENIR LES COMPOSANTS SUR LES BOULONS, ELLES PEUVENT ÊTRE JETÉES.

NOTICE DISPONIBLE AU TÉLÉCHARGEMENT SUR :
WWW.RG-RACING.COM

R&G

Unit 1, Shelley's Lane, East Worldham, Alton, Hampshire, GU34 3AQ
Tel: +44 (0)1420 89007 Fax: +44 (0)1420 87301 www.rg-racing.com Email: info@rg-racing.com

**OUTILS REQUIS**

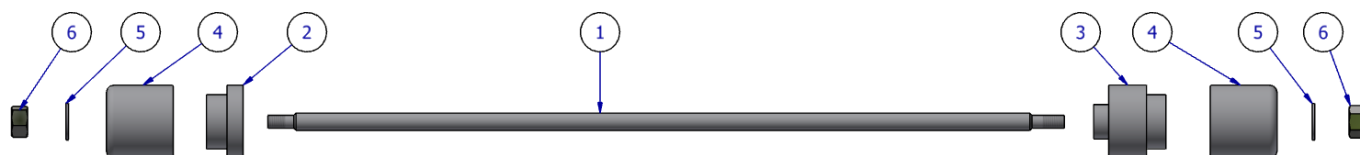
- Clé à cliquet + douilles 2 x 13mm.
- Super glue (peut aider).

VALEURS DE SERRAGE

M4 BOULON = 8Nm
 M5 BOULON = 12Nm
 M6 BOULON = 15Nm
 M8 BOULON = 20Nm
 M10 BOULON = 40Nm
 M12 BOULON = 40Nm

LÉGENDE

ARTICLE No.	DESCRIPTION
1	(SB041) AXE
2	(S1443) ENTRETOISE CÔTÉ GAUCHE
3	(SB1444) ENTRETOISE CÔTÉ DROIT
4	(B0445 M8) PROTECTION CRASH DES 2 CÔTÉS
5	M8x19mm RONDELLE (x2)
6	M8x1.25 ÉCROU (x2)

SCHÉMA D'ENSEMBLE**POINT DE VUE DEPUIS L'ARRIÈRE DE LA MOTO****GAUCHE****DROITE**

R&G

Unit 1, Shelley's Lane, East Worldham, Alton, Hampshire, GU34 3AQ
 Tel: +44 (0)1420 89007 Fax: +44 (0)1420 87301 www.rg-racing.com Email: info@rg-racing.com



NOTICE DE MONTAGE

5. Pour démarrer ce processus de montage, placez l'un des écrous Nyloc M8 (ARTICLE 6) sur une extrémité de l'axe (ARTICLE 1) et serrez-le jusqu'à ce qu'au moins 2 filets traversent le Nyloc.

Suggestion de montage : l'utilisation d'une petite quantité de super glue sur un filetage de l'axe aidera à créer un nombre pair de filetages des deux côtés de la protection bras oscillant une fois complètement serré.

6. Une fois le Nyloc installé, vous pouvez ensuite faire glisser la rondelle (ARTICLE 5), la protection (ARTICLE 4) et l'entretoise côté droit (ARTICLE 3) le long de l'axe comme indiqué sur le SCHÉMA D'ASSEMBLAGE.
7. Faites ensuite glisser le demi-ensemble à travers le côté droit de l'axe avant. Une fois à travers, placez l'entretoise côté gauche (ARTICLE 2), la protection (ARTICLE 4), la rondelle (ARTICLE 5) sur l'axe (ARTICLE 1) qui passe à travers le côté gauche.
8. Enfin, placez l'écrou Nyloc (ARTICLE 6) et serrez au couple correct en utilisant le tableau des VALEURS DE SERRAGE à la PAGE 2

Voir plus de produits R&G pour votre moto via ce lien :

https://www.rg-racing.com/browsebike/Aprilia/Tuareg_660

ISSUE 1 05/12/2022 (JH)

CONSUMER NOTICE

The catalogue description and any exhibition of samples are only broad indications of the Products and R&G may make design changes which do not diminish their performance or visual appeal and supplying them in such state shall conform to the order. The Buyer acknowledges no representation or warranty (other than as to title) has been given or will apply to the Products other than those in R&G's order or confirmation and the Buyer confirms it has chosen the Products as being of merchantable quality and suitable for its particular purposes. Where R&G fits the Products or undertakes other services it shall exercise reasonable skill and care and rectify any fault free of charge unless the workmanship has been disturbed. The Buyer is responsible for ensuring that the warranty on the motorcycle is not affected by the fitting of the Products. On return of any defective Products R&G shall at its option either supply a replacement or refund the purchase money but shall not be liable if the Products have been modified or used or maintained otherwise than in accordance with R&G's or manufacturer's instructions and good engineering practice or if the defect arises from accident or neglect. Other than identified above and subject to R&G not limiting its liability for causing death and personal injury, it shall not be liable for indirect or consequential loss and otherwise its liability shall be limited to the amounts paid by the Buyer for the Products or the fitting or service concerned. These terms do not affect the Buyer's statutory rights.

R&G RACING RETURNS POLICY (NON-FAULTY GOODS)

Returns must be pre-authorized (if not pre-authorized the return will be rejected). Goods may only be returned direct to us if they were purchased direct from us (customer must prove if necessary). Otherwise to be returned to original vendor. Goods must be in re-sellable condition, in the opinion of R&G Racing. All returns are subject to a 25% restocking and handling fee (25% of the gross value exc. P&P - at the prevailing price at time of purchase). The customer must pay any and all carriage charges. No returns of discontinued products, unless within 14 days of purchase. This policy does not affect your statutory rights and does not refer to faulty goods.

R&G

Unit 1, Shelley's Lane, East Worldham, Alton, Hampshire, GU34 3AQ

Tel: +44 (0)1420 89007 Fax: +44 (0)1420 87301 www.rg-racing.com Email: info@rg-racing.com