



FITTING INSTRUCTIONS FOR CP0534 AERO CRASH PROTECTORS
KTM 390 ADVENTURE 2020-



THIS KIT CONTAINS THE ITEMS PICTURED AND LABELLED OVER PAGE.

SOME PARTS MAY BE SHOWN FOR CLARITY OF INSTRUCTIONS ONLY.

DO NOT PROCEED UNTIL YOU ARE SURE ALL PARTS ARE PRESENT.

PLEASE READ ALL INSTRUCTIONS BEFORE PROCEEDING.

**IF IN ANY DOUBT WHEN FITTING OUR PRODUCTS, CONSULT ONE OF OUR DEALERS
OR HAVE FITTED BY A QUALIFIED TECHNICIAN.**

PLEASE NOTE THAT THE WAY THE KIT IS PACKED DOES NOT NECESSARILY REPRESENT THE WAY OF
MOUNTING TO THE BIKE.

IN THE EVENT OF RUBBER WASHERS BEING USED TO HOLD COMPONENTS ONTO BOLTS,
THESE RUBBER WASHERS CAN BE THROWN AWAY.

DIGITAL COPIES OF THESE INSTRUCTIONS ARE AVAILABLE FROM:

WWW.RG-RACING.COM

R&G Racing

Unit 1, Shelley's Lane, East Worldham, Alton, Hampshire, GU34 3AQ

Tel: +44 (0)1420 89007 Fax: +44 (0)1420 87301 www.rg-racing.com Email: info@rg-racing.com



<u>TOOLS REQUIRED</u>	<u>GENERAL TORQUE SETTINGS</u>
<ul style="list-style-type: none"> • SOCKET & WRENCH SET INCLUDING 15mm and 17mm SOCKETS. • ALLEN KEY SET INCLUDING 4,5 & 6mm. • TORQUE WRENCH (UP TO 50Nm) • SUITABLE SUPPORT JACK 	M4 BOLT = 8Nm M5 BOLT = 12Nm M6 BOLT = 15Nm M8 BOLT = 20Nm M10 BOLT = 40Nm M12 BOLT = 40Nm

LEGEND

ITEM NO.	DESCRIPTION	QTY
ITEM 1	B0431 AERO BOBBINS	2
ITEM 2	S0726 BOBBIN SPACER	2
ITEM 3	S0467 BRACKET SPACER	4
ITEM 4	M0676 MOUNTING BRACKET LHS	1
ITEM 5	M0677 MOUNTING BRACKET RHS	1
ITEM 6	M10 x 80mm HEX HEAD BOBBIN BOLTS	2
ITEM 7	M10 WASHERS	2
ITEM 8	LW0001 LOCKING WASHERS	2
ITEM 9	M8 x 65mm CAP HEAD BOLTS	4
ITEM 10	BC0002 BOBBIN CAPS	2

AERO-STYLE CRASH PROTECTOR ORIENTATION



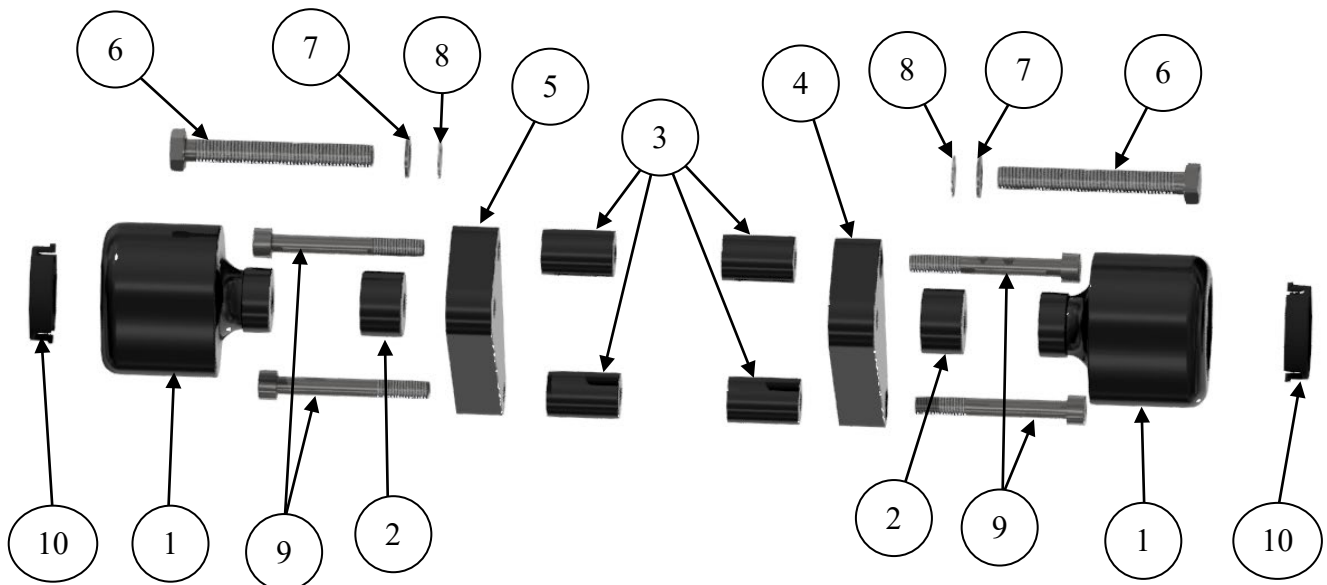
R&G Racing

Unit 1, Shelley's Lane, East Worldham, Alton, Hampshire, GU34 3AQ

Tel: +44 (0)1420 89007 Fax: +44 (0)1420 87301 www.rg-racing.com Email: info@rg-racing.com



LHS & RHS EXPLODED ASSEMBLY VIEW



FITTING PICTURES



Picture 1



Picture 2



Picture 3



Picture 4



Picture 5



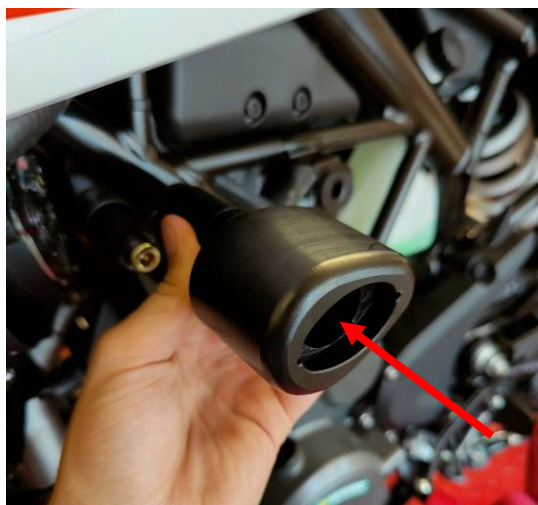
Picture 6



Picture 7



Picture 8



Picture 9



Picture 10



FITTING INSTRUCTIONS

- Begin by removing the lower bolt on the inside of the radiator shroud with a 4mm Allen key as shown in **Picture 1**.
- Remove the upper bolt as shown in **Picture 2**.
- The black plastic piece that makes up the lower part of the fairing can then be unclipped and removed as shown in **Picture 3**.
- This exposes the upper portion of the engine mounting bracket.
- Remove the 2 bolts as shown in **Pictures 4, 5 & 6** with a 6mm Allen key. Note that the engine should be supported with a jack or block of wood during this process.
- Secure the mounting brackets (ITEM 4/5) for the correct side with the bracket spacers (ITEM 3) attached, using 2 of the M8 cap head bolts as shown in **Picture 7 & 8**. (Torque to manufacture recommended specs)
- Attach the Aero Bobbin (ITEM 1) to the mounting bracket using the M10 bolt and washers (ITEM 6,7 & 8) and the Bobbin spacer (ITEM 2) as shown in **Picture 9**.
- The black plastic, lower fairing can then be re-secured the same way as it was removed as described above.
- Repeat the process for the other side.

ISSUE 1 - 07/12/2021 (WW)

CONSUMER NOTICE

The catalogue description and any exhibition of samples are only broad indications of the Products and R&G may make design changes which do not diminish their performance or visual appeal and supplying them in such state shall conform to the order. The Buyer acknowledges no representation or warranty (other than as to title) has been given or will apply to the Products other than those in R&G's order or confirmation and the Buyer confirms it has chosen the Products as being of merchantable quality and suitable for its particular purposes. Where R&G fits the Products or undertakes other services it shall exercise reasonable skill and care and rectify any fault free of charge unless the workmanship has been disturbed. The Buyer is responsible for ensuring that the warranty on the motorcycle is not affected by the fitting of the Products. On return of any defective Products R&G shall at its option either supply a replacement or refund the purchase money but shall not be liable if the Products have been modified or used or maintained otherwise than in accordance with R&G's or manufacturer's instructions and good engineering practice or if the defect arises from accident or neglect. Other than identified above and subject to R&G not limiting its liability for causing death and personal injury, it shall not be liable for indirect or consequential loss and otherwise its liability shall be limited to the amounts paid by the Buyer for the Products or the fitting or service concerned. These terms do not affect the Buyer's statutory rights.

R&G RACING RETURNS POLICY (NON-FAULTY GOODS)

Returns must be pre-authorized (if not pre-authorized the return will be rejected). Goods may only be returned direct to us if they were purchased direct from us (customer must prove if necessary). Otherwise to be returned to original vendor. Goods must be in re-sellable condition, in the opinion of R&G Racing. All returns are subject to a 25% restocking and handling fee (25% of the gross value exc. P&P – at the prevailing price at time of purchase). The customer must pay any and all carriage charges. No returns of discontinued products, unless within 14 days of purchase. This policy does not affect your statutory rights and does not refer to faulty goods.

R&G Racing

Unit 1, Shelley's Lane, East Worldham, Alton, Hampshire, GU34 3AQ

Tel: +44 (0)1420 89007 Fax: +44 (0)1420 87301 www.rg-racing.com Email: info@rg-racing.com



NOTICE DE MONTAGE POUR CP0534 AERO PROTECTIONS CRASH
KTM 390 ADVENTURE 2020-



CE KIT CONTIENT LES ARTICLES ILLUSTRÉS ET ÉTIQUETÉS SUR LA PAGE.

CERTAINES PARTIES PEUVENT ÊTRE PRÉSENTES UNIQUEMENT POUR LA CLARTÉ DES INSTRUCTIONS.

NE PAS PROCÉDER AU MONTAGE TANT QUE VOUS N'ÊTES PAS SÛR QUE TOUTES LES PIÈCES SOIENT PRÉSENTES.

VEUILLEZ LIRE TOUTES LES INSTRUCTIONS AVANT DE CONTINUER.

EN CAS DE DOUTE LORS DU MONTAGE DE NOS PRODUITS, CONSULTEZ UN DE NOS REVENDEURS OU FAITES APPEL À UN TECHNICIEN QUALIFIÉ.

VEUILLEZ NOTER QUE LA FAÇON DONT LE KIT EST EMBALLÉ NE REPRÉSENTE PAS NECESSAIREMENT LA MANIÈRE DE LE MONTER SUR LA MOTO.

SI DES RONDELLES EN CAOUTCHOUC SONT UTILISÉES POUR MAINTENIR LES COMPOSANTS SUR LES BOULONS, ELLES PEUVENT ÊTRE JETÉES.

NOTICE DISPONIBLE AU TÉLÉCHARGEMENT SUR : WWW.RG-RACING.COM

R&G Racing

Unit 1, Shelley's Lane, East Worldham, Alton, Hampshire, GU34 3AQ

Tel: +44 (0)1420 89007 Fax: +44 (0)1420 87301 www.rg-racing.com Email: info@rg-racing.com



<u>OUTILS REQUIS</u>	<u>VALEURS DE SERRAGE</u>
<ul style="list-style-type: none"> • CLÉ À CLIQUET + DOUILLES 15mm & 17mm. • CLÉS ALLEN 4,5 & 6mm. • CLÉ DYNAMOMÉTRIQUE (À 40Nm) • PRISE ADAPTÉE POUR SUPPORTER LE MOTEUR 	M4 BOULON = 8Nm M5 BOULON = 12Nm M6 BOULON = 15Nm M8 BOULON = 20Nm M10 BOULON = 40Nm M12 BOULON = 40Nm

LÉGENDE

ARTICLE NO.	DESCRIPTION	QTÉ
ARTICLE 1	B0431 PROTECTIONS CRASH	2
ARTICLE 2	S0726 ENTRETOISE	2
ARTICLE 3	S0467 ENTRETOISE	4
ARTICLE 4	M0676 SUPPORT DE MONTAGE GAUCHE	1
ARTICLE 5	M0677 SUPPORT DE MONTAGE DROIT	1
ARTICLE 6	M10 x 80mm BOULONS	2
ARTICLE 7	M10 RONDELLES	2
ARTICLE 8	LW0001 RONDELLES DE BLOCAGE	2
ARTICLE 9	M8 x 65mm BOULONS	4
ARTICLE 10	BC0002 CAPUCHONS DE BOBINE	2

ORIENTATION DE LA PROTECTION CRASH



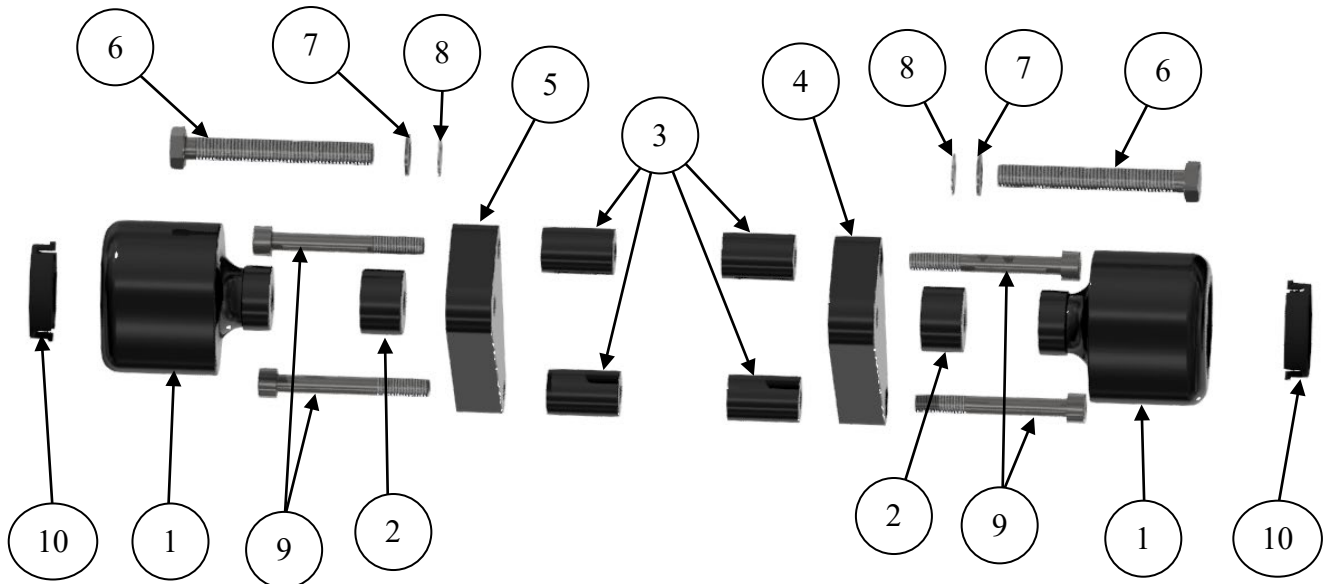
R&G Racing

Unit 1, Shelley's Lane, East Worldham, Alton, Hampshire, GU34 3AQ

Tel: +44 (0)1420 89007 Fax: +44 (0)1420 87301 www.rg-racing.com Email: info@rg-racing.com



VUE D'ENSEMBLE CÔTÉ GAUCHE ET DROIT



PHOTOS DE MONTAGE



Photo 1



Photo 2





Photo 3



Photo 4



Photo 5



Photo 6



Photo 7

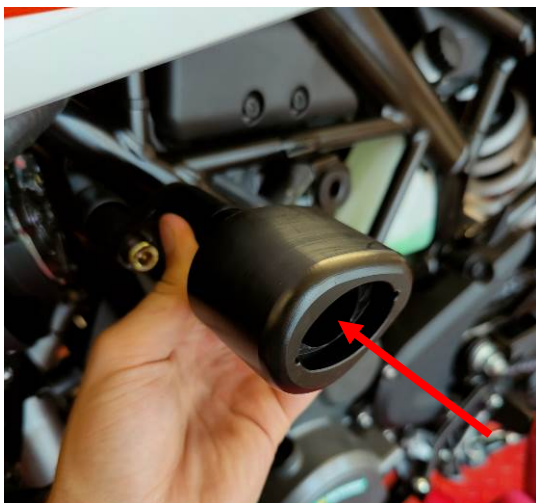


Photo 8



Photo 9

Photo 10



NOTICE DE MONTAGE

- Commencez par retirer le boulon inférieur à l'intérieur du carénage de radiateur avec une clé Allen de 4 mm comme indiqué sur la photo 1.
- Retirez le boulon supérieur comme indiqué sur la photo 2.
- La pièce en plastique noir qui constitue la partie inférieure du carénage peut alors être déclipée et retirée comme indiqué sur la Photo 3.
- Cela expose la partie supérieure du support de montage du moteur.
- Retirez les 2 boulons comme indiqué sur les photos 4, 5 et 6 avec une clé Allen de 6 mm. Notez que le moteur doit être soutenu par un cric ou un bloc de bois pendant ce processus.
- Fixez les supports de montage (ARTICLE 4/5) pour le bon côté avec les entretoises de support (ARTICLE 3) attachées, en utilisant 2 des boulons à tête cylindrique M8 comme indiqué sur les photos 7 et 8. (Couple pour fabriquer les spécifications recommandées)
- Fixez la protection crash (ARTICLE 1) au support de montage à l'aide du boulon M10 et des rondelles (ARTICLE 6,7 & 8) et de l'entretoise de protection (ARTICLE 2) comme indiqué sur la photo 9.
- Le carénage inférieur en plastique noir peut ensuite être refixé de la même manière qu'il a été retiré comme décrit ci-dessus.
- Répétez le processus de l'autre côté.

ISSUE 1 - 07/12/2021 (WW)

CONSUMER NOTICE

The catalogue description and any exhibition of samples are only broad indications of the Products and R&G may make design changes which do not diminish their performance or visual appeal and supplying them in such state shall conform to the order. The Buyer acknowledges no representation or warranty (other than as to title) has been given or will apply to the Products other than those in R&G's order or confirmation and the Buyer confirms it has chosen the Products as being of merchantable quality and suitable for its particular purposes. Where R&G fits the Products or undertakes other services it shall exercise reasonable skill and care and rectify any fault free of charge unless the workmanship has been disturbed. The Buyer is responsible for ensuring that the warranty on the motorcycle is not affected by the fitting of the Products. On return of any defective Products R&G shall at its option either supply a replacement or refund the purchase money but shall not be liable if the Products have been modified or used or maintained otherwise than in accordance with R&G's or manufacturer's instructions and good engineering practice or if the defect arises from accident or neglect. Other than identified above and subject to R&G not limiting its liability for causing death and personal injury, it shall not be liable for indirect or consequential loss and otherwise its liability shall be limited to the amounts paid by the Buyer for the Products or the fitting or service concerned. These terms do not affect the Buyer's statutory rights.

R&G RACING RETURNS POLICY (NON-FAULTY GOODS)

Returns must be pre-authorized (if not pre-authorized the return will be rejected). Goods may only be returned direct to us if they were purchased direct from us (customer must prove if necessary). Otherwise to be returned to original vendor. Goods must be in re-sellable condition, in the opinion of R&G Racing. All returns are subject to a 25% restocking and handling fee (25% of the gross value exc. P&P - at the prevailing price at time of purchase). The customer must pay any and all carriage charges. No returns of discontinued products, unless within 14 days of purchase. This policy does not affect your statutory rights and does not refer to faulty goods.

R&G Racing

Unit 1, Shelley's Lane, East Worldham, Alton, Hampshire, GU34 3AQ

Tel: +44 (0)1420 89007 Fax: +44 (0)1420 87301 www.rg-racing.com Email: info@rg-racing.com



MONTAGEANLEITUNG FÜR CP0534 AERO STURZPADS
KTM 390 ADVENTURE 2020-



ALLE KIT-TEILE SIND AUF DEN NACHFOLGENDEN SEITEN ABGEBILDET UND GEKENNZEICHNET.

DIE ABGEBILDETEN TEILE DIENEN LEDIGLICH ZUR ERKLÄRUNG.

ÜBERPRÜFEN SIE ZUERST, DASS ALLE TEILE VORHANDEN SIND.

LESEN SIE DIE MONTAGEANLEITUNG KOMPLETT DURCH, BEVOR SIE ANFANGEN.

WENN SIE BEI DER MONTAGE DIESES PRODUKTES UNSICHER SIND, BITTE EINEN UNSERER HÄNDLER KONTAKTIEREN ODER DAS KIT VON EINEM QUALIFIZIERTEN ZWEIRAD-MECHANIKER MONTIEREN LASSEN.

DIE VERPACKUNG DER TEILE STELLT NICHT DIE REIHENFOLGE DER MONTAGE DAR.

HINWEIS FÜR KITS MIT PLASTIKUNTERLEGSCHLEIBEN AN DEN SCHRAUBEN –
DIESE PLASTIK-UNTERLEGSCHLEIBEN WERDEN NICHT FÜR DEN EINBAU BENÖTIGT.

EINE DIGITALE VERSION DIESER MONTAGEANLEITUNG KANN AUF FOLGENDER SEITE HERUNTERGELADEN WERDEN:

WWW.RG-RACING.COM

R&G Racing

Unit 1, Shelley's Lane, East Worldham, Alton, Hampshire, GU34 3AQ

Tel: +44 (0)1420 89007 Fax: +44 (0)1420 87301 www.rg-racing.com Email: info@rg-racing.com



<u>SIE BENÖTIGEN FOLGENDES WERKZEUG</u>	<u>ALLGEM. ANZUGSDREHMOMENT</u>
<ul style="list-style-type: none"> • STECKSCHLÜSSEL-SATZ INKL. 15mm und 17mm STECKSCHLÜSSEL • SATZ INBUSSCHLÜSSEL INKL. 4,5 & 6mm • DREHMOMENTSCHLÜSSEL (BIS 50Nm) • GEEIGNETER MOTORRADHEBER / MONTAGESTÄNDER 	<p>M4 SCHRAUBE = 8Nm M5 SCHRAUBE = 12Nm M6 SCHRAUBE = 15Nm M8 SCHRAUBE = 20Nm M10 SCHRAUBE = 40Nm M12 SCHRAUBE = 40Nm</p>

LIEFERUMFANG

ARTIKEL NR.	BESCHREIBUNG	MENGE
ARTIKEL 1	B0431 AERO STURZPAD	2
ARTIKEL 2	S0726 DISTANZHALTER STURZPAD	2
ARTIKEL 3	S0467 DISTANZHALTER HALTERUNG	4
ARTIKEL 4	M0676 MONTAGEHALTEURNG LINKE SEITE	1
ARTIKEL 5	M0677 MONTAGEHALTERUNG RECHTE SEITE	1
ARTIKEL 6	M10 x 80mm SECHSKANTSCHRAUBE	2
ARTIKEL 7	M10 UNTERLEGSCHIEBE	2
ARTIKEL 8	LW0001 ZAHNSCHIEBE	2
ARTIKEL 9	M8 x 65mm INNENSECHSKANTSCHRAUBE	4
ARTIKEL 10	BC0002 STURZPAD-SCHUTZKAPPEN	2



AERO-STYLE STURZPAD - ORIENTIERUNG

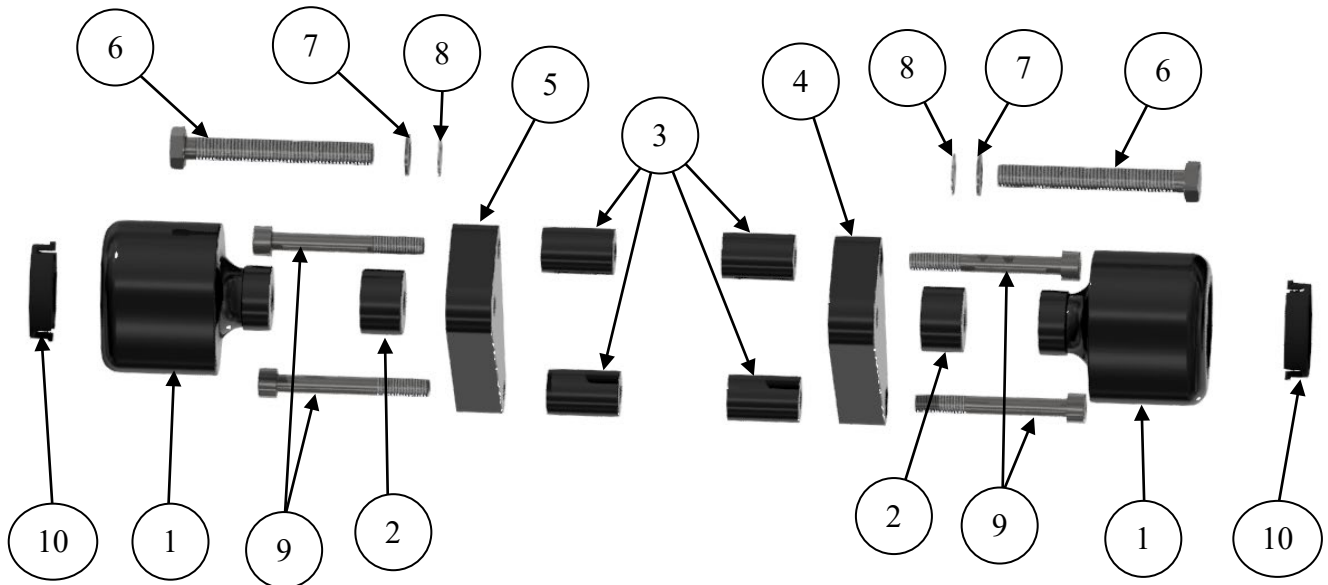
R&G Racing

Unit 1, Shelley's Lane, East Worldham, Alton, Hampshire, GU34 3AQ

Tel: +44 (0)1420 89007 Fax: +44 (0)1420 87301 www.rg-racing.com Email: info@rg-racing.com



ZUSAMMENBAU LINKE & RECHTE SEITE - EXPLOSIONSZEICHNUNG



MONTAGE - ABBILDUNGEN



Abbildung 1



Abbildung 2



Abbildung 3

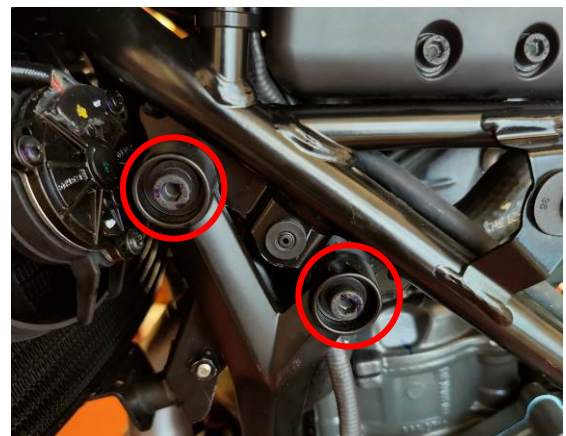


Abbildung 4



Abbildung 5

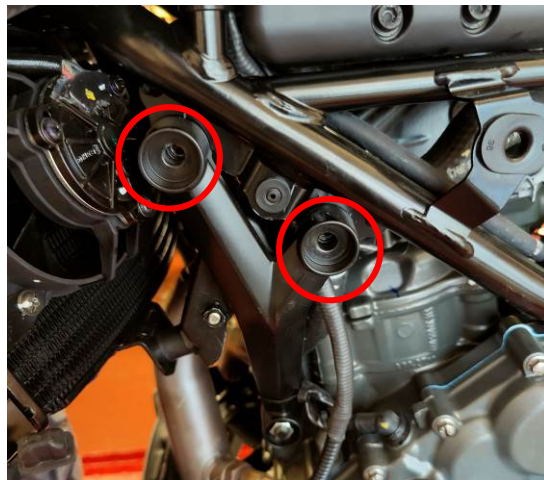


Abbildung 6



Abbildung 7



Abbildung 8



Abbildung 9



Abbildung 10



MONTAGEANLEITUNG

- Entfernen Sie zuerst die untere Schraube an der Innenseite der Kühlerverkleidung mit einem 4mm Inbusschlüssel wie in **Abbildung 1** abgebildet.
- Entfernen Sie die obere Schraube wie in **Abbildung 2** abgebildet.
- Das schwarze Verkleidungsteil, welches als unterste Teil der Verkleidung dient kann nun gelöst und entfernt werden wie in **Abbildung 3** abgebildet.
- Nun ist der obere Abschnitt des Montagehalterung für den Motor zugänglich.
- Entfernen Sie die 2 Schrauben, die in den **Abbildungen 4, 5 & 6** abgebildet sind mit einem 6mm Inbusschlüssel. Hinweis: Während dieses Vorgangs sollte der Motor mit einem Heber oder Holzblock gestützt sein.
- Die Montagehalterungen (ARTIKEL 4/5) mit den Distanzhaltern (ARTIKEL 3) angebaut an der jeweils richtigen Seite befestigen mit zwei M8 Inbusschrauben sichern wie in den **Abbildungen 7 & 8** abgebildet. (hierbei den vom Hersteller empfohlenen Anzugsdrehmoment beachten).
- Das Aero-Sturzpad (ARTIKEL 1) mit der M10 Schraube und den Unterlegscheiben (ARTIKEL 6,7 & 8) und den Distanzhalter für das Sturzpad (ARTIKEL 2) an der Montagehalterung befestigen wie in **Abbildung 9** abgebildet.
- Das schwarze Verkleidungsteil kann auf gleicher Weise wie oben beschrieben für die Entfernung wieder befestigt werden.
- Wiederholen Sie den Vorgang an der anderen Seite.

AUSGABE 1 - 07/12/2021 (WW)

CONSUMER NOTICE

The catalogue description and any exhibition of samples are only broad indications of the Products and R&G may make design changes which do not diminish their performance or visual appeal and supplying them in such state shall conform to the order. The Buyer acknowledges no representation or warranty (other than as to title) has been given or will apply to the Products other than those in R&G's order or confirmation and the Buyer confirms it has chosen the Products as being of merchantable quality and suitable for its particular purposes. Where R&G fits the Products or undertakes other services it shall exercise reasonable skill and care and rectify any fault free of charge unless the workmanship has been disturbed. The Buyer is responsible for ensuring that the warranty on the motorcycle is not affected by the fitting of the Products. On return of any defective Products R&G shall at its option either supply a replacement or refund the purchase money but shall not be liable if the Products have been modified or used or maintained otherwise than in accordance with R&G's or manufacturer's instructions and good engineering practice or if the defect arises from accident or neglect. Other than identified above and subject to R&G not limiting its liability for causing death and personal injury, it shall not be liable for indirect or consequential loss and otherwise its liability shall be limited to the amounts paid by the Buyer for the Products or the fitting or service concerned. These terms do not affect the Buyer's statutory rights.

R&G RACING RETURNS POLICY (NON-FAULTY GOODS)

Returns must be pre-authorized (if not pre-authorized the return will be rejected). Goods may only be returned direct to us if they were purchased direct from us (customer must prove if necessary). Otherwise to be returned to original vendor. Goods must be in re-sellable condition, in the opinion of R&G Racing. All returns are subject to a 25% restocking and handling fee (25% of the gross value exc. P&P – at the prevailing price at time of purchase). The customer must pay any and all carriage charges. No returns of discontinued products, unless within 14 days of purchase. This policy does not affect your statutory rights and does not refer to faulty goods.

R&G Racing

Unit 1, Shelley's Lane, East Worldham, Alton, Hampshire, GU34 3AQ

Tel: +44 (0)1420 89007 Fax: +44 (0)1420 87301 www.rg-racing.com Email: info@rg-racing.com