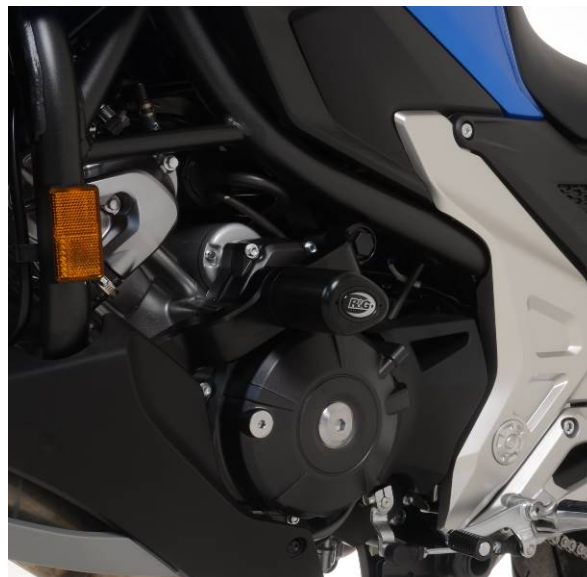




FITTING INSTRUCTIONS FOR CP0525 AERO CRASH PROTECTORS
HONDA NC750X 2021-



THIS KIT CONTAINS THE ITEMS PICTURED AND LABELLED OVER PAGE.

SOME PARTS MAY BE SHOWN FOR CLARITY OF INSTRUCTIONS ONLY.

DO NOT PROCEED UNTIL YOU ARE SURE ALL PARTS ARE PRESENT.

PLEASE READ ALL INSTRUCTIONS BEFORE PROCEEDING.

**IF IN ANY DOUBT WHEN FITTING OUR PRODUCTS, CONSULT ONE OF OUR DEALERS
OR HAVE FITTED BY A QUALIFIED TECHNICIAN.**

PLEASE NOTE THAT THE WAY THE KIT IS PACKED DOES NOT NECESSARILY REPRESENT THE WAY OF
MOUNTING TO THE BIKE.

IN THE EVENT OF RUBBER WASHERS BEING USED TO HOLD COMPONENTS ONTO BOLTS,
THESE RUBBER WASHERS CAN BE THROWN AWAY.

DIGITAL COPIES OF THESE INSTRUCTIONS ARE AVAILABLE FROM:

WWW.RG-RACING.COM



<u>TOOLS REQUIRED</u>	<u>GENERAL TORQUE SETTINGS</u>
<ul style="list-style-type: none"> • Set of Allen Keys to include 5mm • Set of metric sockets and ratchet to include 8mm, 12mm, 17mm and 19mm • Torque Wrench (Up to 50Nm) • Suitable support jack 	M4 BOLT = 8Nm M5 BOLT = 12Nm M6 BOLT = 15Nm M8 BOLT = 20Nm M10 BOLT = 40Nm M12 BOLT = 40Nm

LEGEND

ITEM NO.	DESCRIPTION	QTY
ITEM 1	M0656 (MOUNTING BLOCK LHS)	1
ITEM 2	M0657 (MOUNTING BLOCK RHS)	1
ITEM 3	S1365 (SPACER 51mm LONG LHS)	1
ITEM 4	S0797 (SPACER 32mm LONG RHS)	1
ITEM 5	M12x1.25x100mm LONG HEX HEAD BOLT	1
ITEM 6	M12x1.25x90mm LONG HEX HEAD BOLT	1
ITEM 7	M12x1.25x85mm LONG HEX HEAD BOLT	1
ITEM 8	M12x1.25x65mm LONG HEX HEAD BOLT	1
ITEM 9	M10x1.25x75mm LONG HEX HEAD BOLT	2
ITEM 10	B0061 WITH CS341 (AERO SHAPE BOBBIN)	2
ITEM 11	BC0002 (BOBBIN CAP)	2
ITEM 12	S0533 WITH CS437 (AERO SHAPE SPACER 20mm LONG)	2
ITEM 13	LW0001 (M12 SHAKEPROOF WASHER)	2
ITEM 14	M10 WASHER (20mm OD)	2
ITEM 15	NC0002 (M12 BOLT HEAD CAPS)	2
ITEM 16	S1366 (SPACER 10mm LONG CLUTCH CABLE)	2
ITEM 17	M6x1.00x35mm LONG FLANGED HEX HEAD BOLT	2

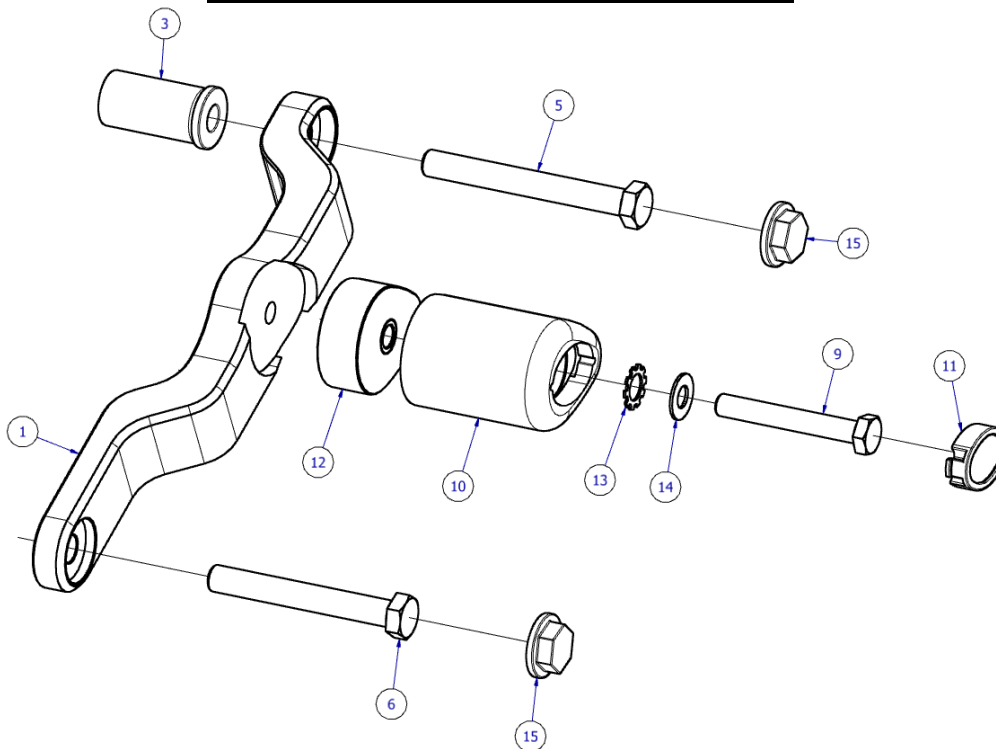
R&G Racing

Unit 1, Shelley's Lane, East Worldham, Alton, Hampshire, GU34 3AQ

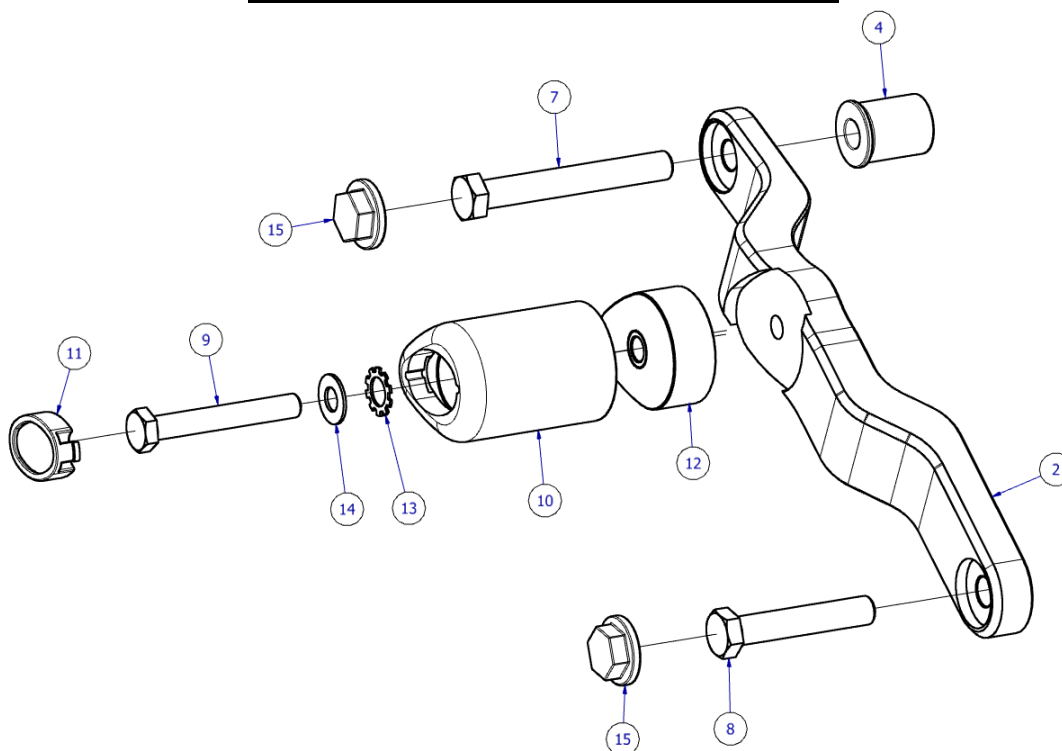
Tel: +44 (0)1420 89007 Fax: +44 (0)1420 87301 www.rg-racing.com Email: info@rg-racing.com



LHS EXPLODED ASSEMBLY VIEW



RHS EXPLODED ASSEMBLY VIEW

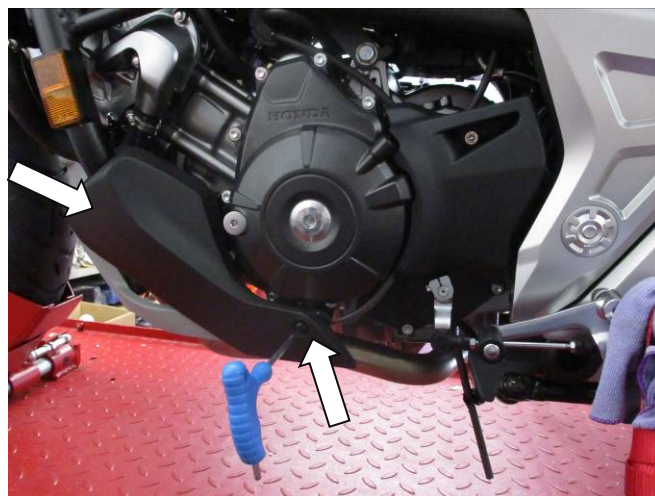




FITTING PICTURES



Picture 1



Picture 2



Picture 3



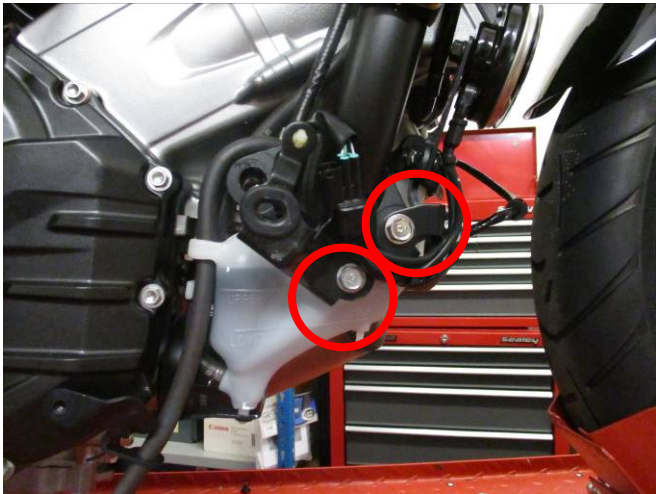
Picture 4



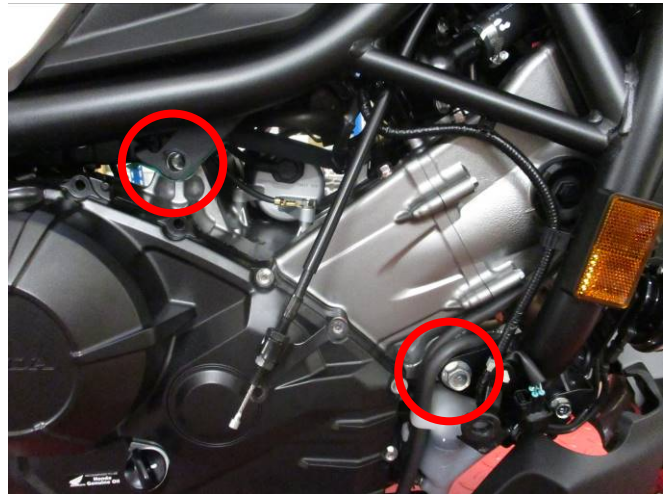
Picture 5



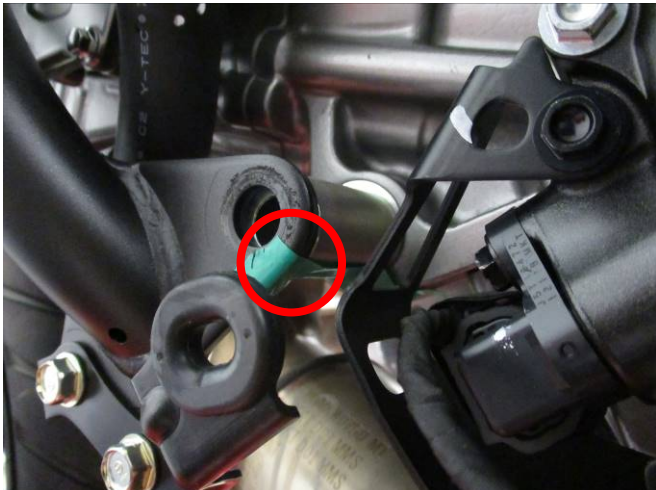
Picture 6



Picture 7



Picture 8



Picture 9



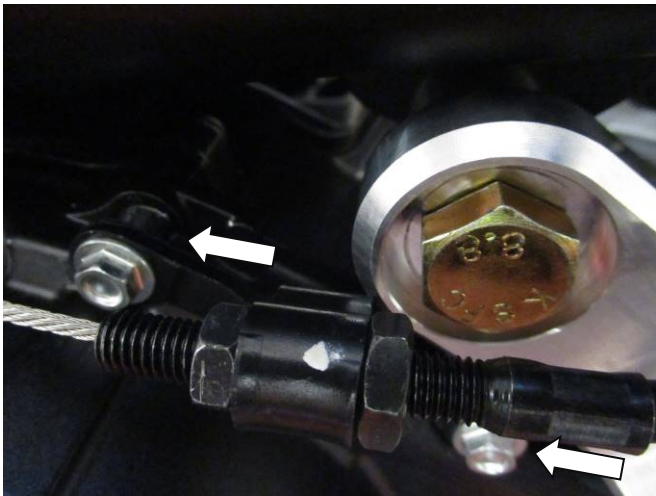
Picture 10



Picture 11



Picture 12



Picture 13



Picture 14



Picture 15



Picture 16



FITTING INSTRUCTIONS

Before removing engine bolts, ensure the bike is upright and supported by a suitable engine stand or jack placed under the sump of the motorbike to support the partial weight of the engine, this will prevent the engine from moving during fitting.

IF YOU ARE NOT COMFORTABLE, HAVE FITTED BY A QUALIFIED TECHNICIAN. READ ALL STEPS BEFORE PROCEEDING.

BELLY PAN REMOVAL:

- To access the engine mounting bolts, the belly pan must be removed.
- Remove the 2 x bolts on the LHS of the belly pan as shown in **Picture 1**, followed by the 2 x bolts securing the RHS as shown in **Picture 2**.
- Carefully un-secure the locating tabs shown in **Picture 3** and **Picture 4** from both sides of the belly pan, ensuring none of the tabs are damaged.
- Now the belly pan can be removed and stored safely for re-installation.

PREPARATION:

- Place a suitable jack beneath the engine in a central position using a piece of wood or plastic between the jack and engine. As shown in **Picture 5**.
- Apply very light pressure to the underside of the engine to support the engine during the fitment process.

RHS INSTALLATION:

- Remove the 2 x bolts securing the clutch cable stay to the RHS engine case as shown in **Picture 6**.
- As shown in **Picture 7**, loosen the 2 x bolts in order to access the lower RHS engine mounting bolt.
- Now you can remove the 2 x RHS engine mounting bolts as highlighted in **Picture 8**.
- Ensure the OEM spacers are not lost, use some tape underneath the spacers to secure them in place as shown in **Picture 9**.
- Refer to **RHS EXPLODED ASSEMBLY VIEW** for the orientation of the mounting bracket (**item 2**).
- Take the supplied bolts (**items 7 & 8**) and spacer (**item 4**) and present the mounting bracket (**item 2**) with spacer (**item 4**) assembly as displayed in **RHS EXPLODED ASSEMBLY VIEW**.
- Secure the mounting bracket to the bike ensuring the 2 x bolts shown in **Picture 10** and **Picture 11** are correctly tightened not exceeding 40Nm.
- Now, referring to **RHS EXPLODED ASSEMBLY VIEW** take the aero shape spacer (**item 12**) and present this along with a bobbin (**item 10**) to the mounting block (**item 2**) and secure with the supplied bolt (**item 9**), shake-proof washer (**item 13**) and plain washer (**item 14**).
- With the bobbin now installed, place a bobbin cap in the end of the bobbin (**item 11**) as shown in **Picture 12**.
- Install the 2 bolt head caps onto the 2 x M12 mounting bracket bolts (**items 7 & 8**).
- Secure the clutch cable stay using the 2 x M6 bolts (**item 17**) and 2 x supplied spacers (**item 16**) between the engine case and cable stay bracket as shown in **Picture 13**.

R&G Racing

Unit 1, Shelley's Lane, East Worldham, Alton, Hampshire, GU34 3AQ

Tel: +44 (0)1420 89007 Fax: +44 (0)1420 87301 www.rg-racing.com Email: info@rg-racing.com



LHS INSTALLATION:

- Remove the 2 x engine mounting bolts as shown in **Picture 14**.
- Ensure the OEM spacers are not lost, use some tape underneath the spacers to secure them in place as shown in **Picture 15**.
- Refer to **LHS EXPLODED ASSEMBLY VIEW** for the orientation of the mounting bracket (**item 1**).
- Take the supplied bolts (**items 5 & 6**) and spacer (**item 3**) and present the mounting bracket (**item 1**) with spacer (**item 3**) assembly as displayed in **LHS EXPLODED ASSEMBLY VIEW**.
- Secure the mounting bracket to the bike ensuring the 2 x bolts shown in **Picture 16** are correctly tightened not exceeding 40Nm.
- Now, referring to **LHS EXPLODED ASSEMBLY VIEW** take the aero shape spacer (**item 12**) and present this along with a bobbin (**item 10**) to the mounting block (**item 1**) and secure with the supplied bolt (**item 9**), shake-proof washer (**item 13**) and plain washer (**item 14**).
- With the bobbin now installed, place a bobbin cap in the end of the bobbin (**item 11**) as shown in **Picture 16**.
- Install the 2 bolt head caps onto the 2 x M12 mounting bracket bolts (**items 5 & 6**).

BELLY PAN INSTALLATION:

- Please follow the steps above in **BELLY PAN REMOVAL** in reverse to secure the belly pan.
- Ensure all bolts are correctly tightened ensuring no clips are damaged during the process.

ISSUE 1 - 08/09/2021 (AO)

CONSUMER NOTICE

The catalogue description and any exhibition of samples are only broad indications of the Products and R&G may make design changes which do not diminish their performance or visual appeal and supplying them in such state shall conform to the order. The Buyer acknowledges no representation or warranty (other than as to title) has been given or will apply to the Products other than those in R&G's order or confirmation and the Buyer confirms it has chosen the Products as being of merchantable quality and suitable for its particular purposes. Where R&G fits the Products or undertakes other services it shall exercise reasonable skill and care and rectify any fault free of charge unless the workmanship has been disturbed. The Buyer is responsible for ensuring that the warranty on the motorcycle is not affected by the fitting of the Products. On return of any defective Products R&G shall at its option either supply a replacement or refund the purchase money but shall not be liable if the Products have been modified or used or maintained otherwise than in accordance with R&G's or manufacturer's instructions and good engineering practice or if the defect arises from accident or neglect. Other than identified above and subject to R&G not limiting its liability for causing death and personal injury, it shall not be liable for indirect or consequential loss and otherwise its liability shall be limited to the amounts paid by the Buyer for the Products or the fitting or service concerned. These terms do not affect the Buyer's statutory rights.

R&G RACING RETURNS POLICY (NON-FAULTY GOODS)

Returns must be pre-authorized (if not pre-authorized the return will be rejected). Goods may only be returned direct to us if they were purchased direct from us (customer must prove if necessary). Otherwise to be returned to original vendor. Goods must be in re-sellable condition, in the opinion of R&G Racing. All returns are subject to a 25% restocking and handling fee (25% of the gross value exc. P&P – at the prevailing price at time of purchase). The customer must pay any and all carriage charges. No returns of discontinued products, unless within 14 days of purchase. This policy does not affect your statutory rights and does not refer to faulty goods.

R&G Racing

Unit 1, Shelley's Lane, East Worldham, Alton, Hampshire, GU34 3AQ

Tel: +44 (0)1420 89007 Fax: +44 (0)1420 87301 www.rg-racing.com Email: info@rg-racing.com